

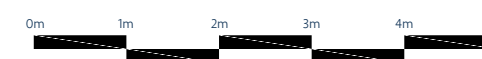
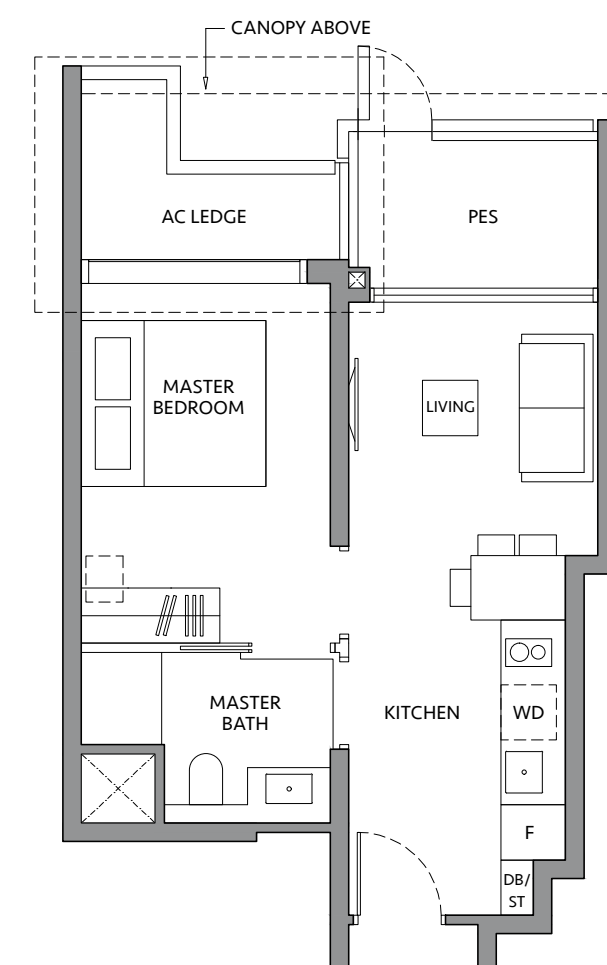
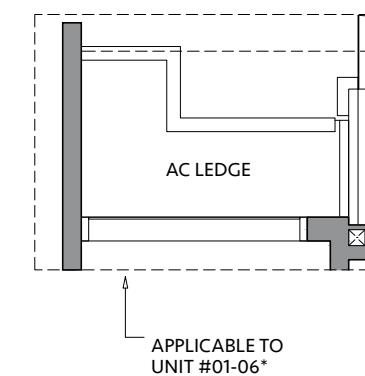
# 1 BED ROOM

**TYPE A1-G\***  
45 sq m / 484 sq ft

**BLK 80\***  
#01-06\*

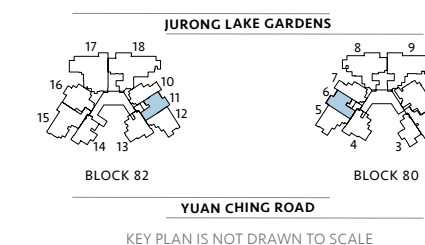
**TYPE A1-G**  
45 sq m / 484 sq ft

**BLK 82**  
#01-11



\*Mirror image

Area includes air-con (A/C) ledge, private enclosed space (PES), balcony and strata void area where applicable. Some units are mirror images of the apartment plans shown in the brochure. Please refer to the key plan for orientation. The plans are subject to change as may be approved by relevant authorities. All floor plans are approximate measurements only and are subject to government re-survey. The PES and balcony shall not be enclosed unless with the approved balcony screen.

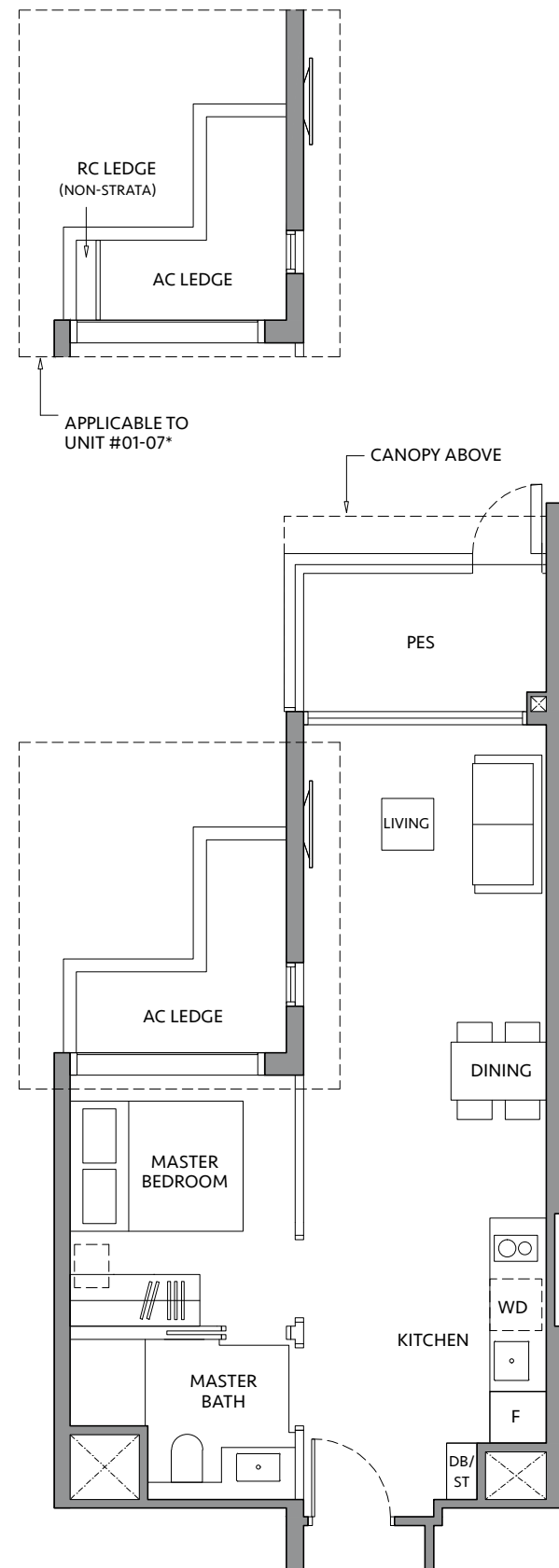


**TYPE A2-G\***  
50 sq m / 538 sq ft

**BLK 80\***  
#01-07\*

**TYPE A2-G**  
50 sq m / 538 sq ft

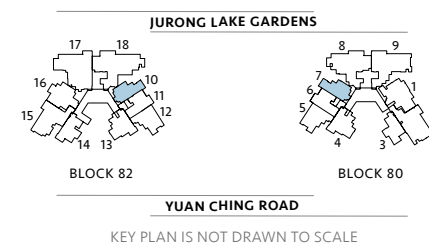
**BLK 82**  
#01-10



\*Mirror image

Area includes air-con (A/C) ledge, private enclosed space (PES), balcony and strata void area where applicable. Some units are mirror images of the apartment plans shown in the brochure. Please refer to the key plan for orientation. The plans are subject to change as may be approved by relevant authorities. All floor plans are approximate measurements only and are subject to government re-survey. The PES and balcony shall not be enclosed unless with the approved balcony screen.

**1 BED ROOM**



**TYPE AS1-G**  
49 sq m / 527 sq ft

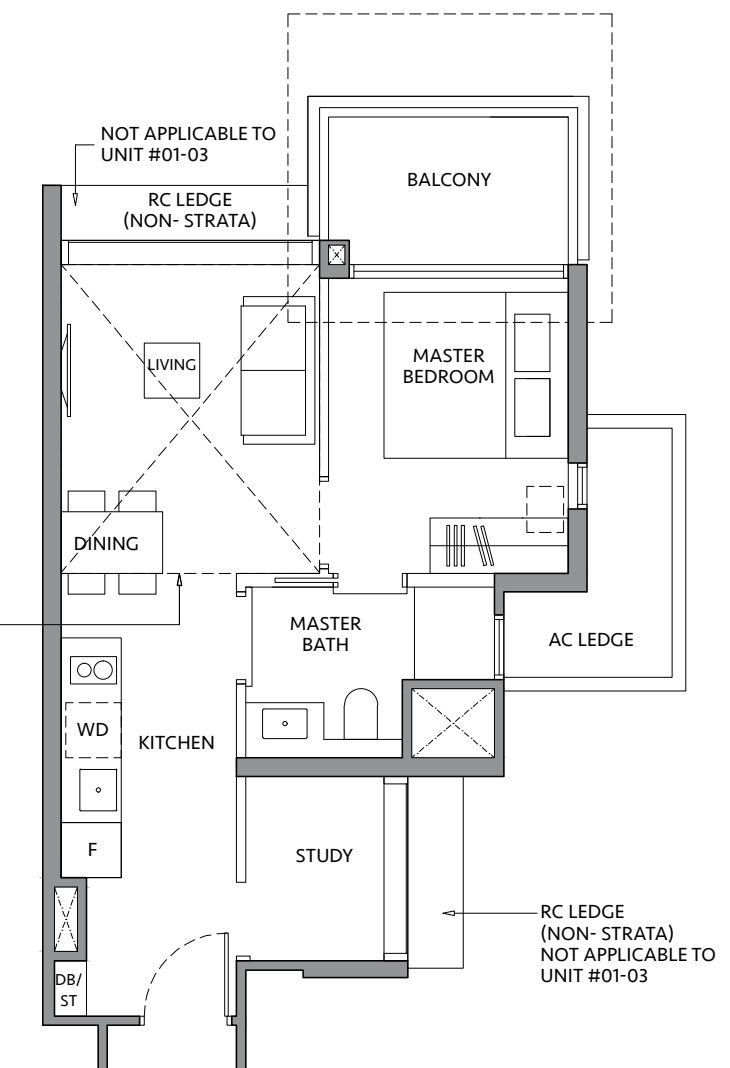
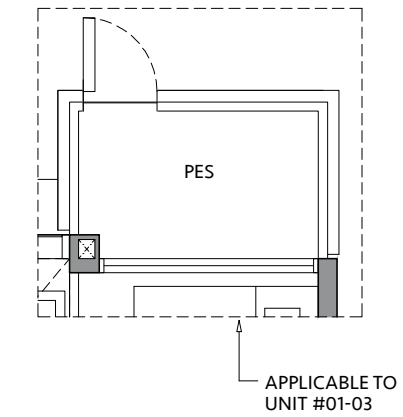
**BLK 80**  
#01-03

**TYPE AS1**  
49 sq m / 527 sq ft

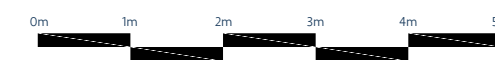
**BLK 80**  
#02-03 to #18-03

**TYPE AS1-R**  
59 sq m / 635 sq ft  
INCLUDING STRATA  
VOID AREA OF 9 sq m /  
97 sq ft ABOVE LIVING  
AND DINING

**BLK 80**  
#19-03

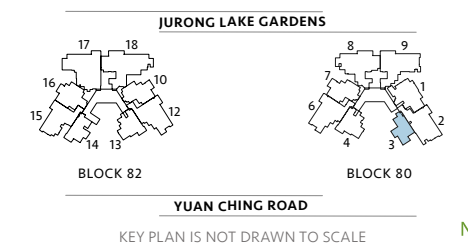


STRATA VOID AT TOP FLOOR UNIT DOTTED LINE DENOTES HIGH CEILING ABOVE FOR UNIT : #19-03



Area includes air-con (A/C) ledge, private enclosed space (PES), balcony and strata void area where applicable. Some units are mirror images of the apartment plans shown in the brochure. Please refer to the key plan for orientation. The plans are subject to change as may be approved by relevant authorities. All floor plans are approximate measurements only and are subject to government re-survey. The PES and balcony shall not be enclosed unless with the approved balcony screen.

**1 BED ROOM + STUDY**



**TYPE B1C-G**  
55 sq m / 592 sq ft

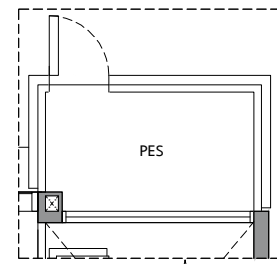
**BLK 82**  
#01-14

**TYPE B1C**  
55 sq m / 592 sq ft

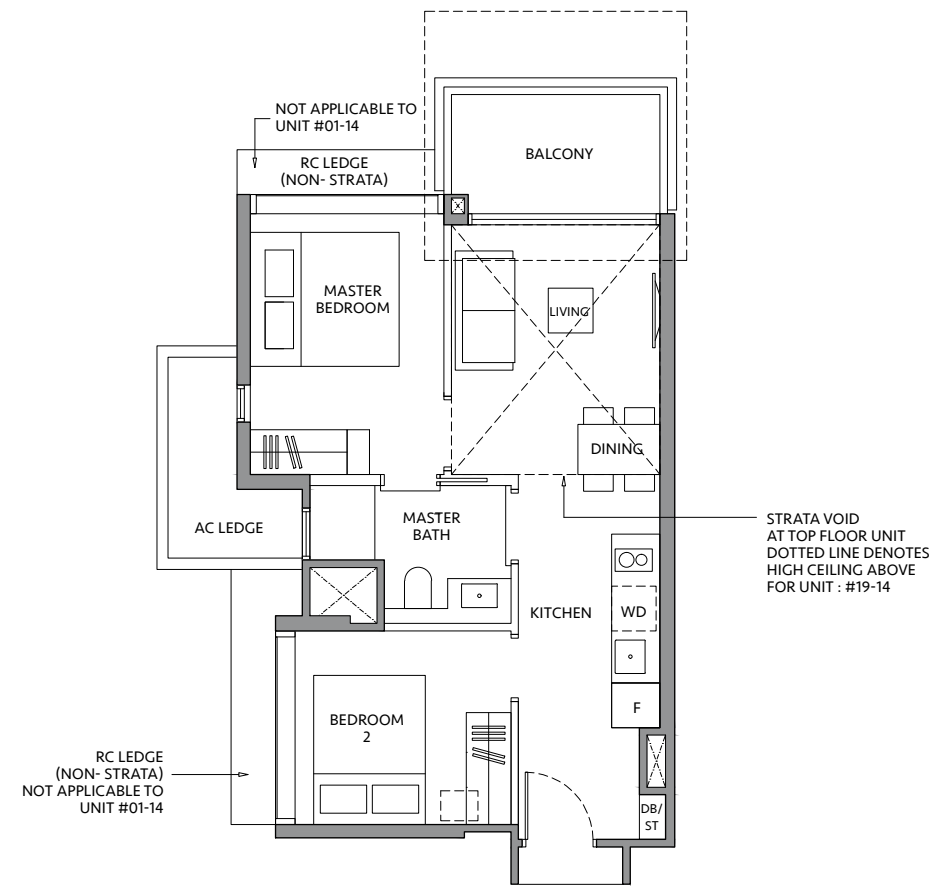
**BLK 82**  
#02-14 to #18-14

**TYPE B1C-R**  
65 sq m / 700 sq ft  
INCLUDING STRATA  
VOID AREA OF 9 sq m /  
97 sq ft ABOVE LIVING  
AND DINING

**BLK 82**  
#19-14



APPLICABLE TO  
UNIT #01-14



STRATA VOID  
AT TOP FLOOR UNIT  
DOTTED LINE DENOTES  
HIGH CEILING ABOVE  
FOR UNIT : #19-14

RC LEDGE  
(NON-STRATA)  
NOT APPLICABLE TO  
UNIT #01-14

**2 BED  
ROOM  
(COMPACT)**

**TYPE B2C<sup>+</sup>-G\***  
63 sq m / 678 sq ft  
**BLK 80\***  
#01-04\*

**TYPE B2C<sup>+</sup>-G**  
63 sq m / 678 sq ft  
**BLK 82**  
#01-13

**TYPE B2C<sup>++</sup>**  
63 sq m / 678 sq ft

**BLK 80\***  
#02-04\* to #18-04\*

**TYPE B2C<sup>+</sup>**  
63 sq m / 678 sq ft

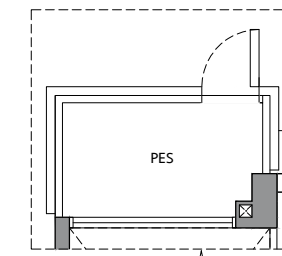
**BLK 82**  
#02-13 to #18-13

**TYPE B2C<sup>+</sup>-R\***  
74 sq m / 797 sq ft  
INCLUDING STRATA  
VOID AREA OF 10 sq m /  
108 sq ft ABOVE LIVING  
AND DINING

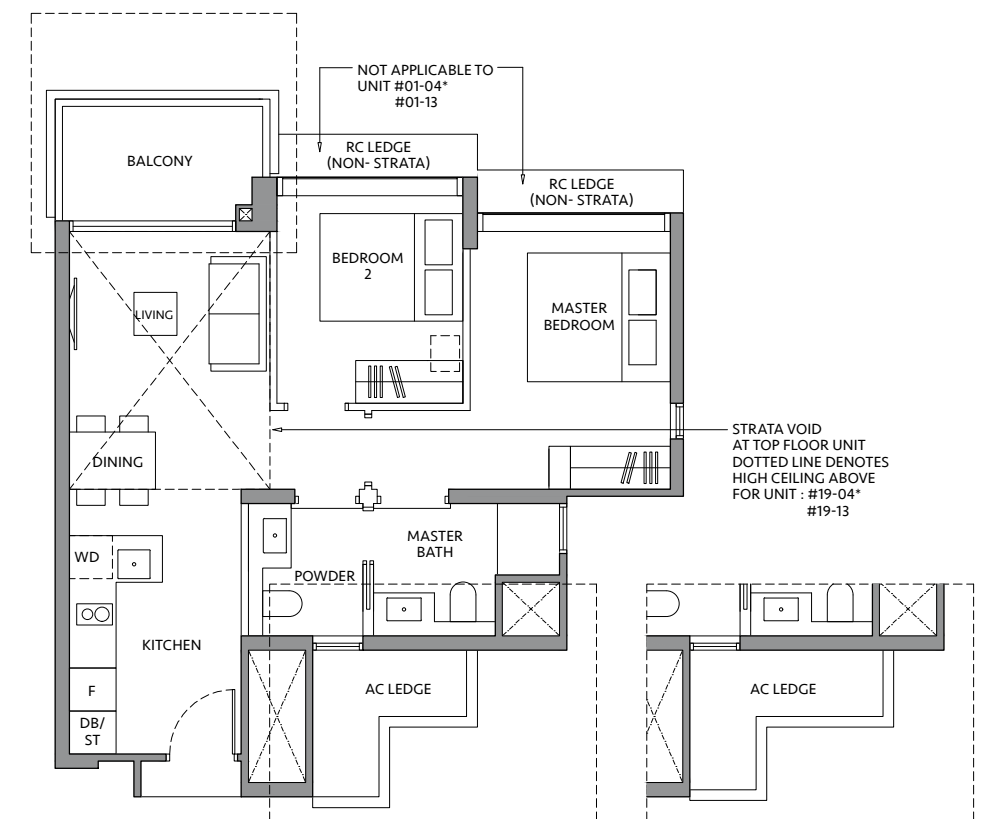
**BLK 80\***  
#19-04\*

**TYPE B2C<sup>+</sup>-R**  
74 sq m / 797 sq ft  
INCLUDING STRATA  
VOID AREA OF 10 sq m /  
108 sq ft ABOVE LIVING  
AND DINING

**BLK 82**  
#19-13



APPLICABLE TO  
UNIT #01-04\*  
#01-13

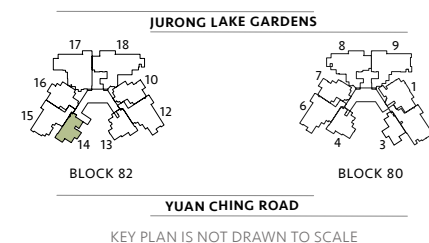


STRATA VOID  
AT TOP FLOOR UNIT  
DOTTED LINE DENOTES  
HIGH CEILING ABOVE  
FOR UNIT : #19-04\*  
#19-13

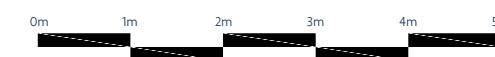
APPLICABLE TO  
UNIT #01-04\* TO #19-04\*



Area includes air-con (A/C) ledge, private enclosed space (PES), balcony and strata void area where applicable. Some units are mirror images of the apartment plans shown in the brochure. Please refer to the key plan for orientation. The plans are subject to change as may be approved by relevant authorities. All floor plans are approximate measurements only and are subject to government re-survey. The PES and balcony shall not be enclosed unless with the approved balcony screen.

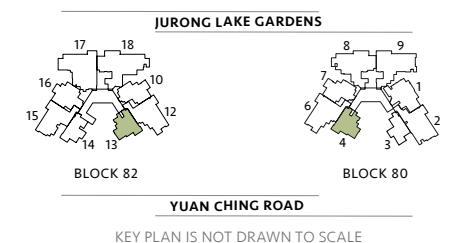


KEY PLAN IS NOT DRAWN TO SCALE



\*Mirror image

Area includes air-con (A/C) ledge, private enclosed space (PES), balcony and strata void area where applicable. Some units are mirror images of the apartment plans shown in the brochure. Please refer to the key plan for orientation. The plans are subject to change as may be approved by relevant authorities. All floor plans are approximate measurements only and are subject to government re-survey. The PES and balcony shall not be enclosed unless with the approved balcony screen.



KEY PLAN IS NOT DRAWN TO SCALE



**TYPE B3P\***  
68 sq m / 732 sq ft

**BLK 80\***  
#02-07\* to #18-07\*

**TYPE B3P**  
68 sq m / 732 sq ft

**BLK 82**  
#02-10 to #18-10

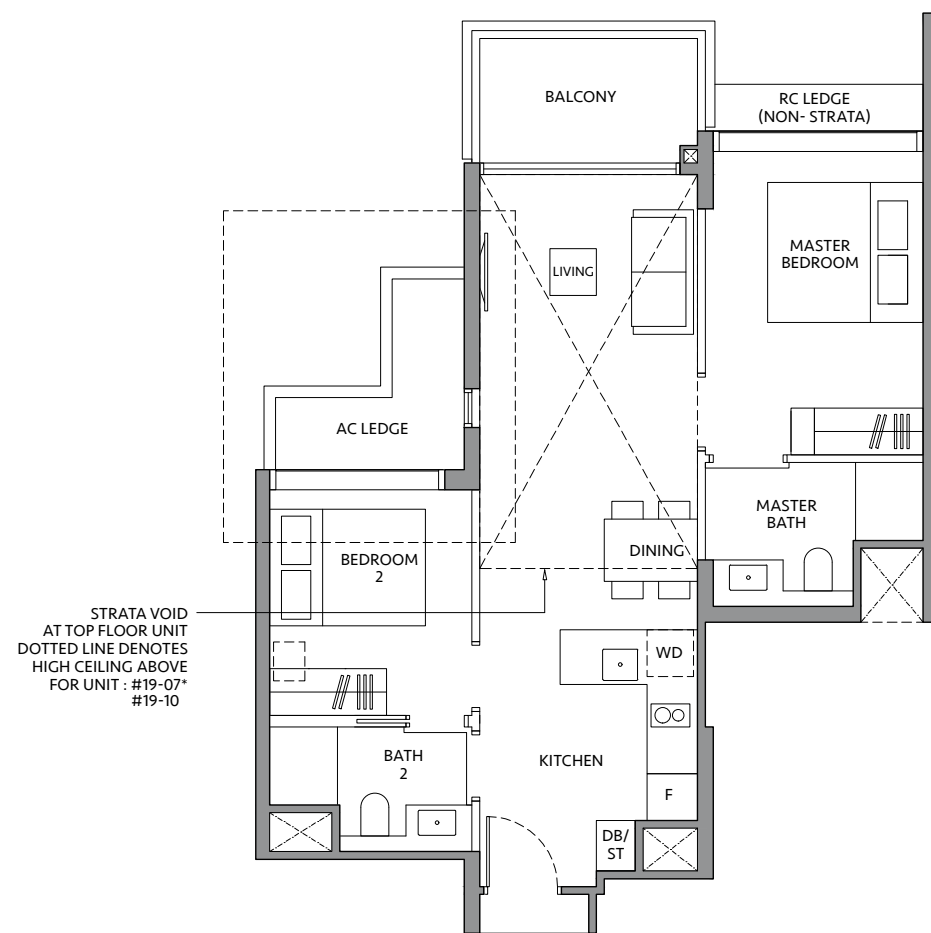
**TYPE B3P-R\***  
83 sq m / 893 sq ft  
INCLUDING STRATA  
VOID AREA OF 14 sq m /  
151 sq ft ABOVE LIVING  
AND DINING

**BLK 80\***  
#19-07\*

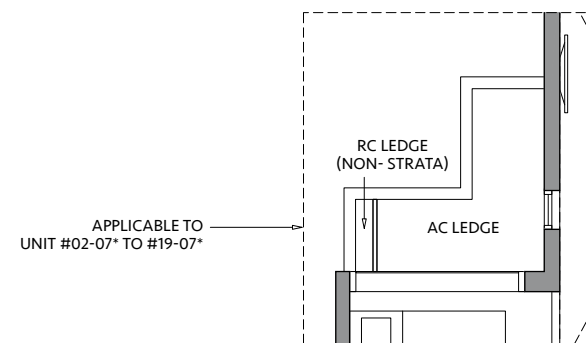
**TYPE B3P-R**  
83 sq m / 893 sq ft  
INCLUDING STRATA VOID  
AREA OF 14 sq m / 151 sq ft  
ABOVE LIVING AND DINING

**BLK 82**  
#19-10

**2 BED  
ROOM  
(PREMIUM)**



STRATA VOID  
AT TOP FLOOR UNIT  
DOTTED LINE DENOTES  
HIGH CEILING ABOVE  
FOR UNIT : #19-07\*  
#19-10

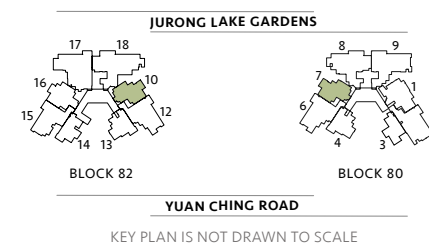


APPLICABLE TO  
UNIT #02-07\* TO #19-07\*



\*Mirror image

Area includes air-con (A/C) ledge, private enclosed space (PES), balcony and strata void area where applicable. Some units are mirror images of the apartment plans shown in the brochure. Please refer to the key plan for orientation. The plans are subject to change as may be approved by relevant authorities. All floor plans are approximate measurements only and are subject to government re-survey. The PES and balcony shall not be enclosed unless with the approved balcony screen.



KEY PLAN IS NOT DRAWN TO SCALE



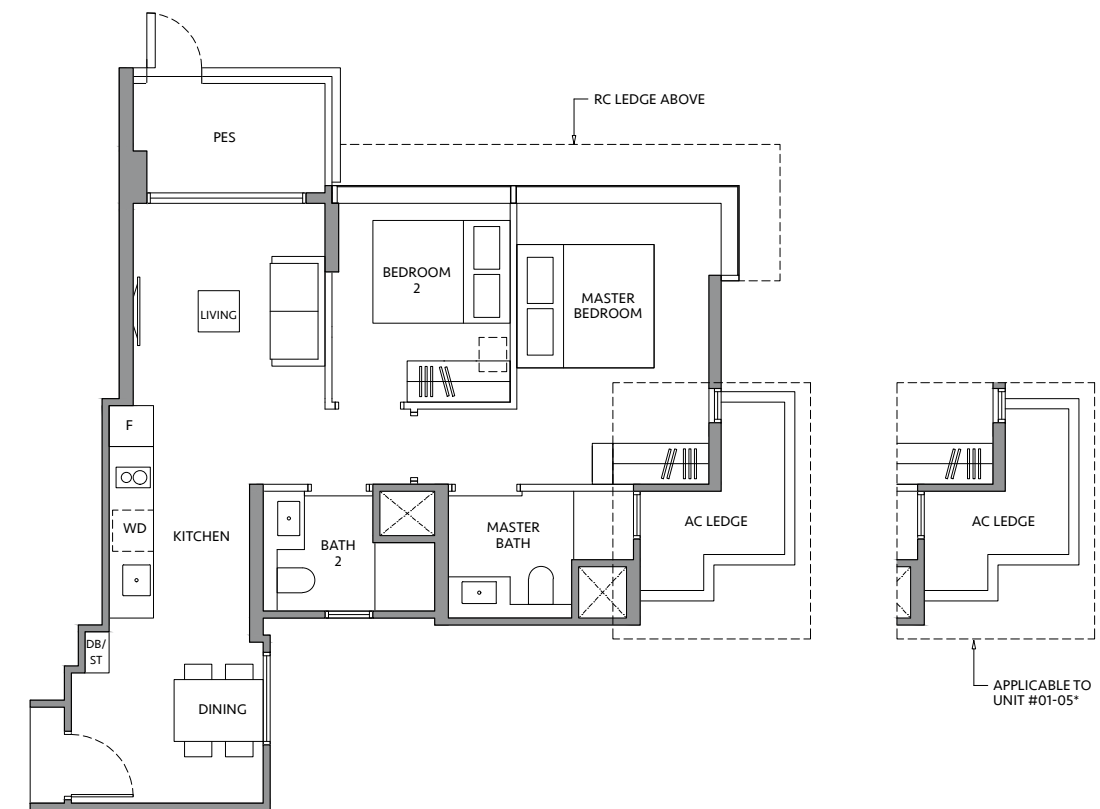
**TYPE B4P-G\***  
71 sq m / 764 sq ft

**BLK 80\***  
#01-05\*

**TYPE B4P-G**  
71 sq m / 764 sq ft

**BLK 82**  
#01-12

**2 BED  
ROOM  
(PREMIUM)**

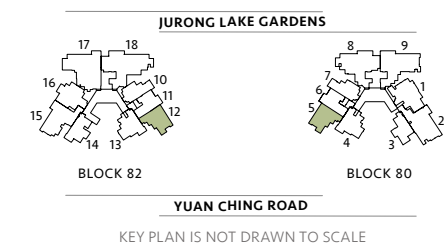


APPLICABLE TO  
UNIT #01-05\*



\*Mirror image

Area includes air-con (A/C) ledge, private enclosed space (PES), balcony and strata void area where applicable. Some units are mirror images of the apartment plans shown in the brochure. Please refer to the key plan for orientation. The plans are subject to change as may be approved by relevant authorities. All floor plans are approximate measurements only and are subject to government re-survey. The PES and balcony shall not be enclosed unless with the approved balcony screen.



KEY PLAN IS NOT DRAWN TO SCALE



**TYPE BS1-G**  
72 sq m / 775 sq ft

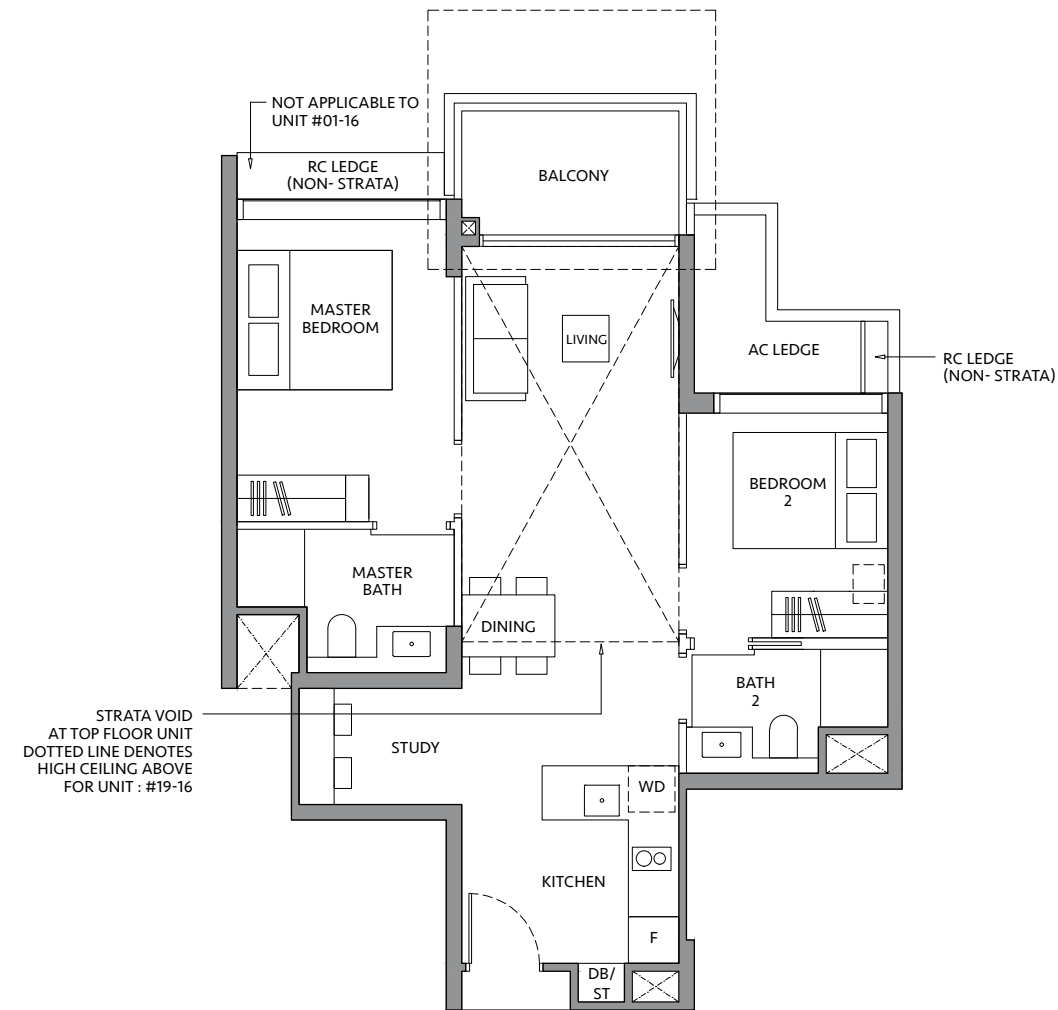
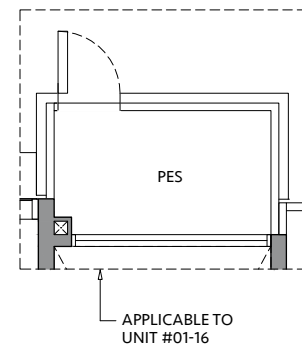
**BLK 82**  
#01-16

**TYPE BS1**  
72 sq m / 775 sq ft

**BLK 82**  
#02-16 to #18-16

**TYPE BS1-R**  
87 sq m / 936 sq ft  
INCLUDING STRATA VOID  
AREA OF 14 sq m /  
151 sq ft ABOVE LIVING  
AND DINING

**BLK 82**  
#19-16



**2 BED ROOM + STUDY**

**TYPE C1-G**  
86 sq m / 926 sq ft

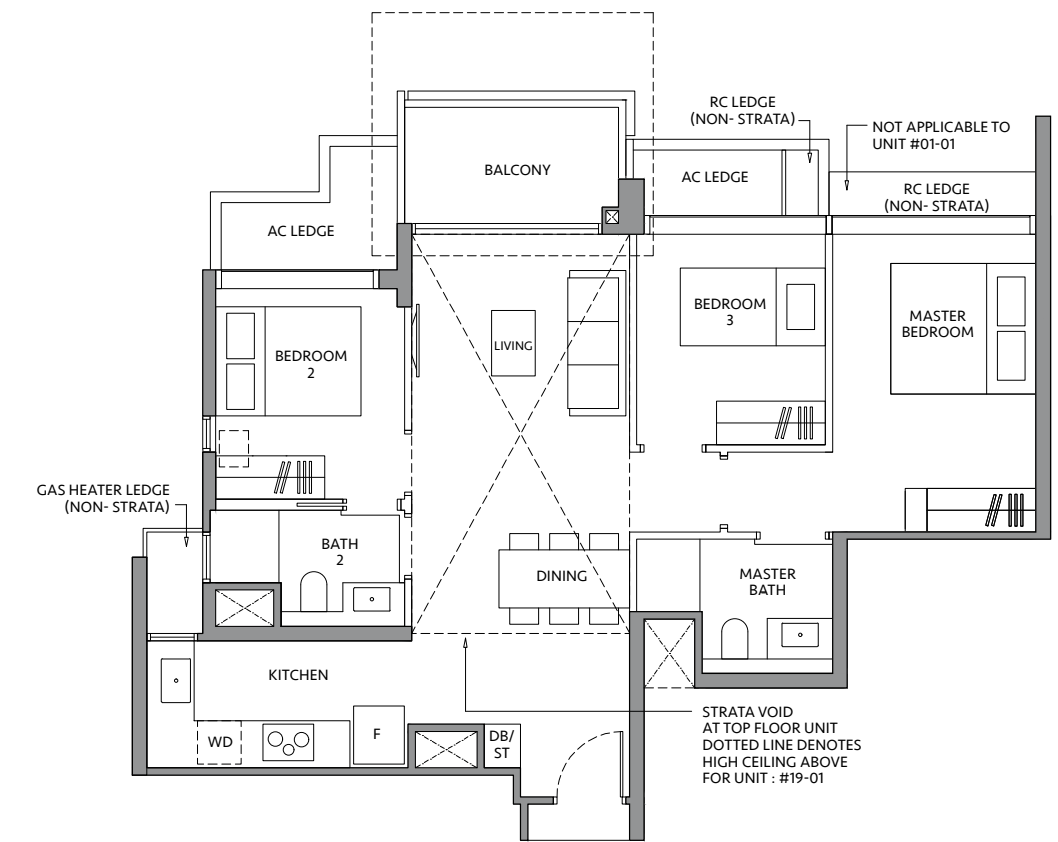
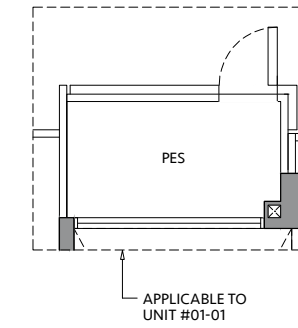
**BLK 80**  
#01-01

**TYPE C1**  
86 sq m / 926 sq ft

**BLK 80**  
#02-01 to #18-01

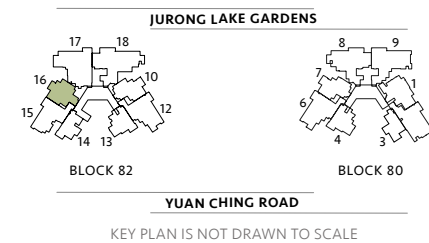
**TYPE C1-R**  
103 sq m / 1,109 sq ft  
INCLUDING STRATA  
VOID AREA OF 16 sq m /  
172 sq ft ABOVE LIVING  
AND DINING

**BLK 80**  
#19-01

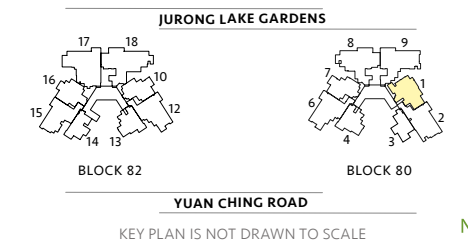


**3 BED ROOM**

Area includes air-con (A/C) ledge, private enclosed space (PES), balcony and strata void area where applicable. Some units are mirror images of the apartment plans shown in the brochure. Please refer to the key plan for orientation. The plans are subject to change as may be approved by relevant authorities. All floor plans are approximate measurements only and are subject to government re-survey. The PES and balcony shall not be enclosed unless with the approved balcony screen.



Area includes air-con (A/C) ledge, private enclosed space (PES), balcony and strata void area where applicable. Some units are mirror images of the apartment plans shown in the brochure. Please refer to the key plan for orientation. The plans are subject to change as may be approved by relevant authorities. All floor plans are approximate measurements only and are subject to government re-survey. The PES and balcony shall not be enclosed unless with the approved balcony screen.



### TYPE C2-G

94 sq m / 1,012 sq ft

**BLK 82**  
#01-15

### TYPE C2

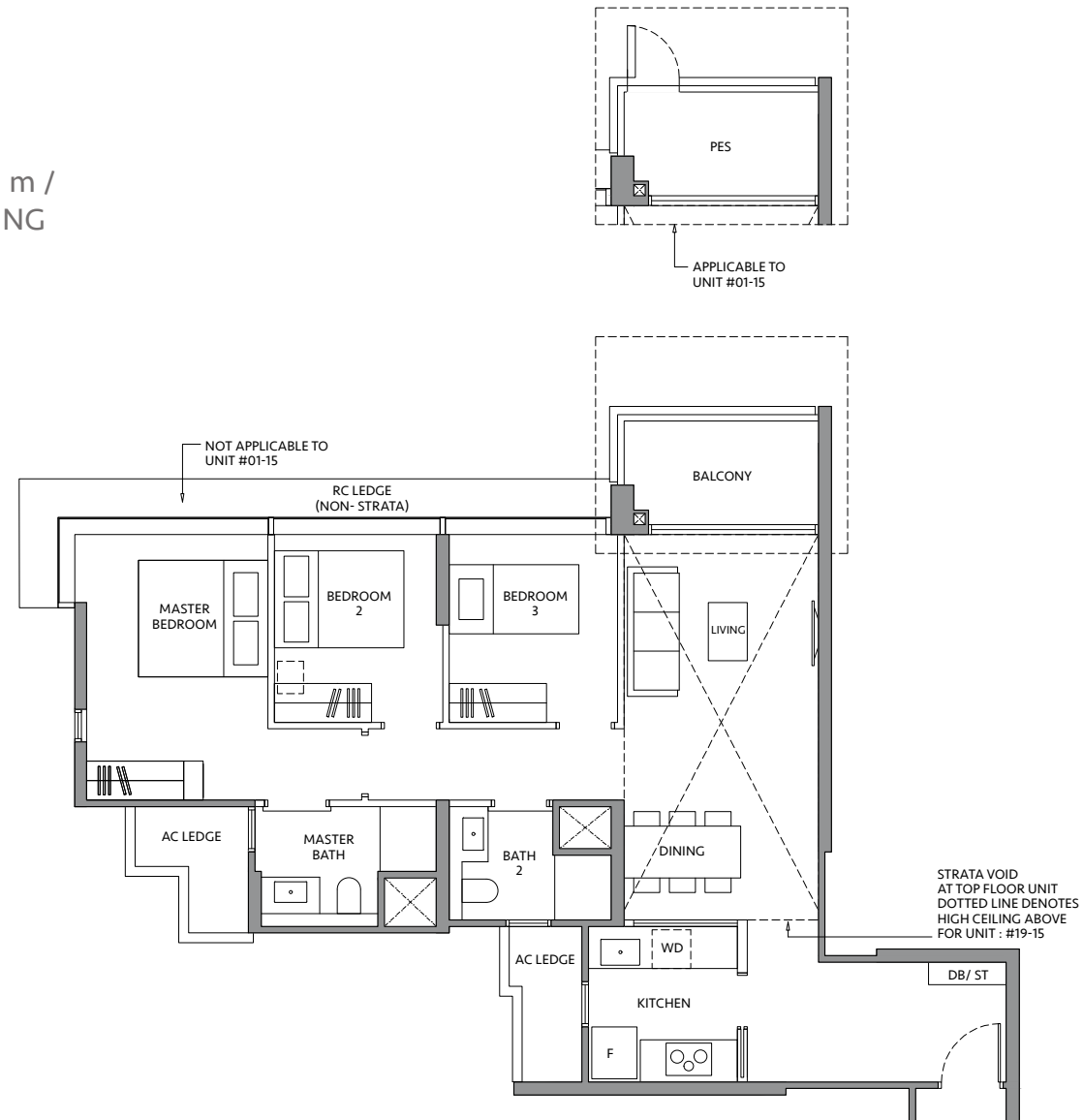
94 sq m / 1,012 sq ft

**BLK 82**  
#02-15 to #18-15

### TYPE C2-R

113 sq m / 1,216 sq ft  
INCLUDING STRATA  
VOID AREA OF 18 sq m /  
194 sq ft ABOVE LIVING  
AND DINING

**BLK 82**  
#19-15



# 3 BED ROOM

### TYPE CS1\*

102 sq m / 1,098 sq ft

**BLK 80\***  
#02-06\* to #18-06\*

### TYPE CS1

102 sq m / 1,098 sq ft

**BLK 82**  
#02-12 to #18-12

### TYPE CS1-R\*

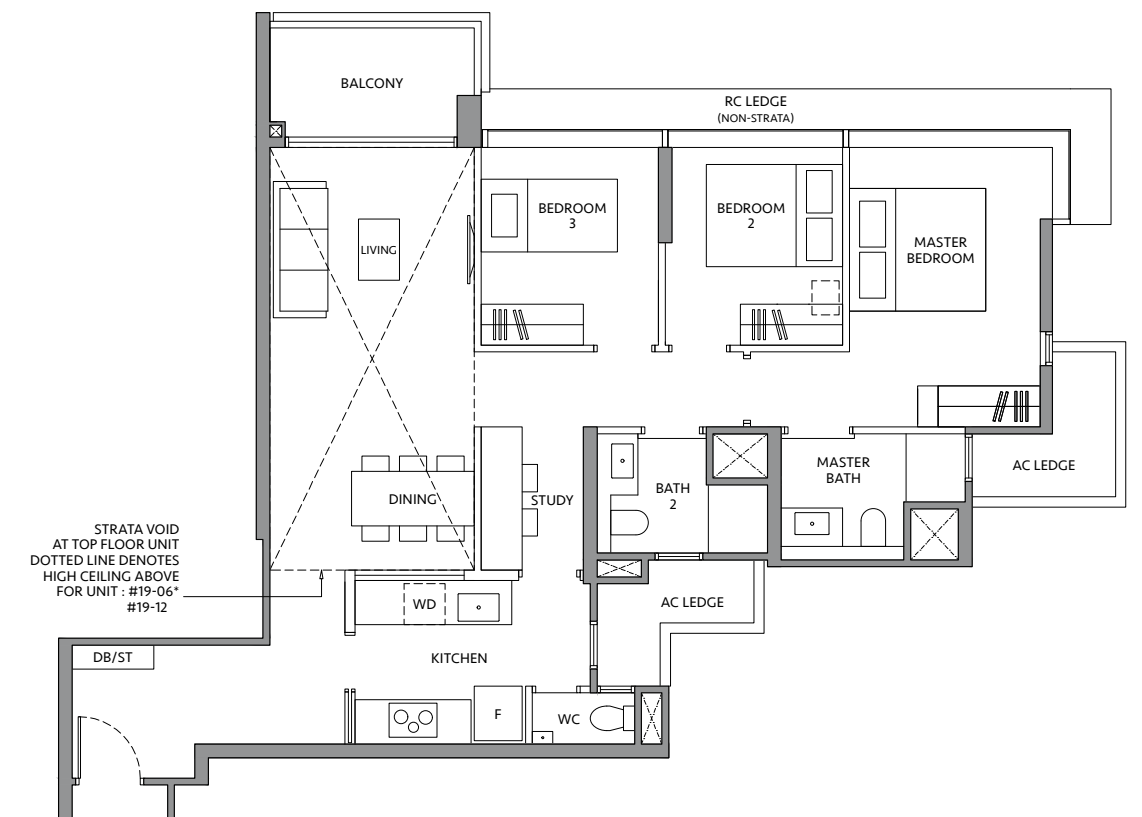
122 sq m / 1,313 sq ft  
INCLUDING STRATA  
VOID AREA OF 19 sq m /  
205 sq ft ABOVE LIVING  
AND DINING

**BLK 80\***  
#19-06\*

### TYPE CS1-R

122 sq m / 1,313 sq ft  
INCLUDING STRATA  
VOID AREA OF 19 sq m /  
205 sq ft ABOVE LIVING  
AND DINING

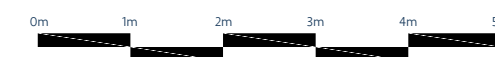
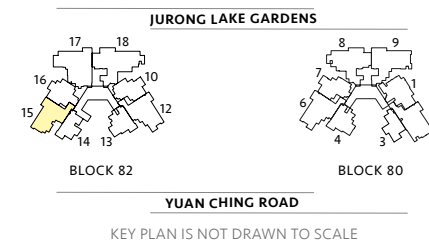
**BLK 82**  
#19-12



# 3 BED ROOM + STUDY

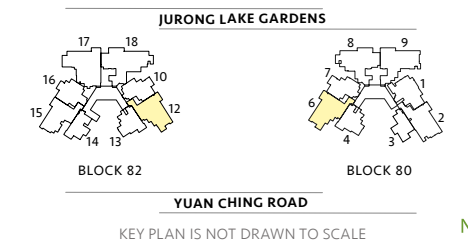


Area includes air-con (A/C) ledge, private enclosed space (PEP), balcony and strata void area where applicable. Some units are mirror images of the apartment plans shown in the brochure. Please refer to the key plan for orientation. The plans are subject to change as may be approved by relevant authorities. All floor plans are approximate measurements only and are subject to government re-survey. The PEP and balcony shall not be enclosed unless with the approved balcony screen.



\*Mirror image

Area includes air-con (A/C) ledge, private enclosed space (PEP), balcony and strata void area where applicable. Some units are mirror images of the apartment plans shown in the brochure. Please refer to the key plan for orientation. The plans are subject to change as may be approved by relevant authorities. All floor plans are approximate measurements only and are subject to government re-survey. The PEP and balcony shall not be enclosed unless with the approved balcony screen.



### TYPE CS2-G

103 sq m / 1,109 sq ft

**BLK 80**  
#01-02

### TYPE CS2

103 sq m / 1,109 sq ft

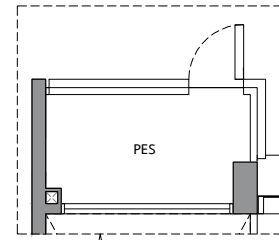
**BLK 80**  
#02-02 to #18-02

### TYPE CS2-R

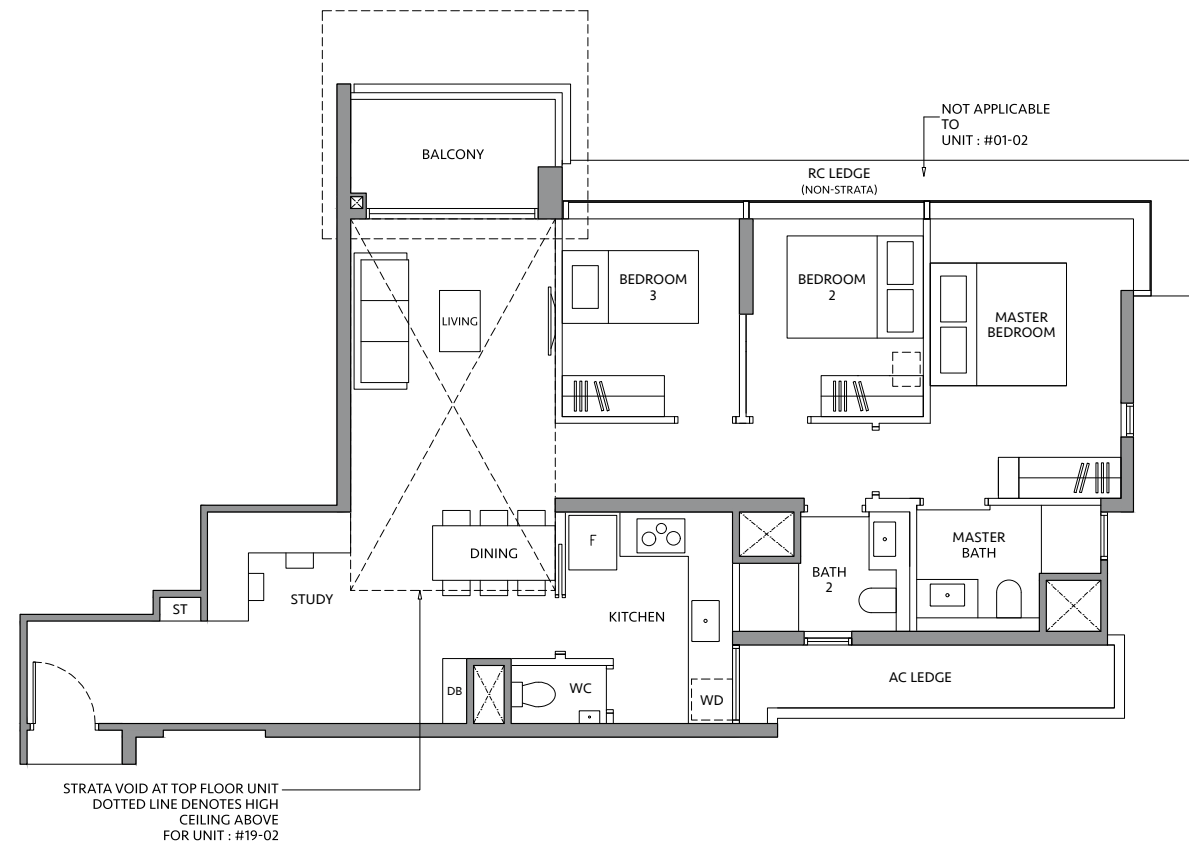
120 sq m / 1,292 sq ft  
INCLUDING STRATA VOID  
AREA OF 16 sq m / 172 sq ft  
ABOVE LIVING AND DINING

**BLK 80**  
#19-02

# 3 BED ROOM + STUDY

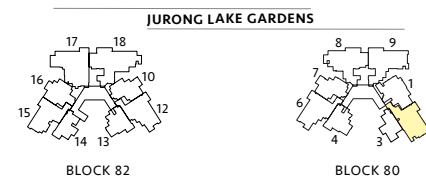


APPLICABLE TO  
UNIT #01-02



STRATA VOID AT TOP FLOOR UNIT  
DOTTED LINE DENOTES HIGH  
CEILING ABOVE  
FOR UNIT : #19-02

NOT APPLICABLE  
TO  
UNIT : #01-02



YUAN CHING ROAD

KEY PLAN IS NOT DRAWN TO SCALE



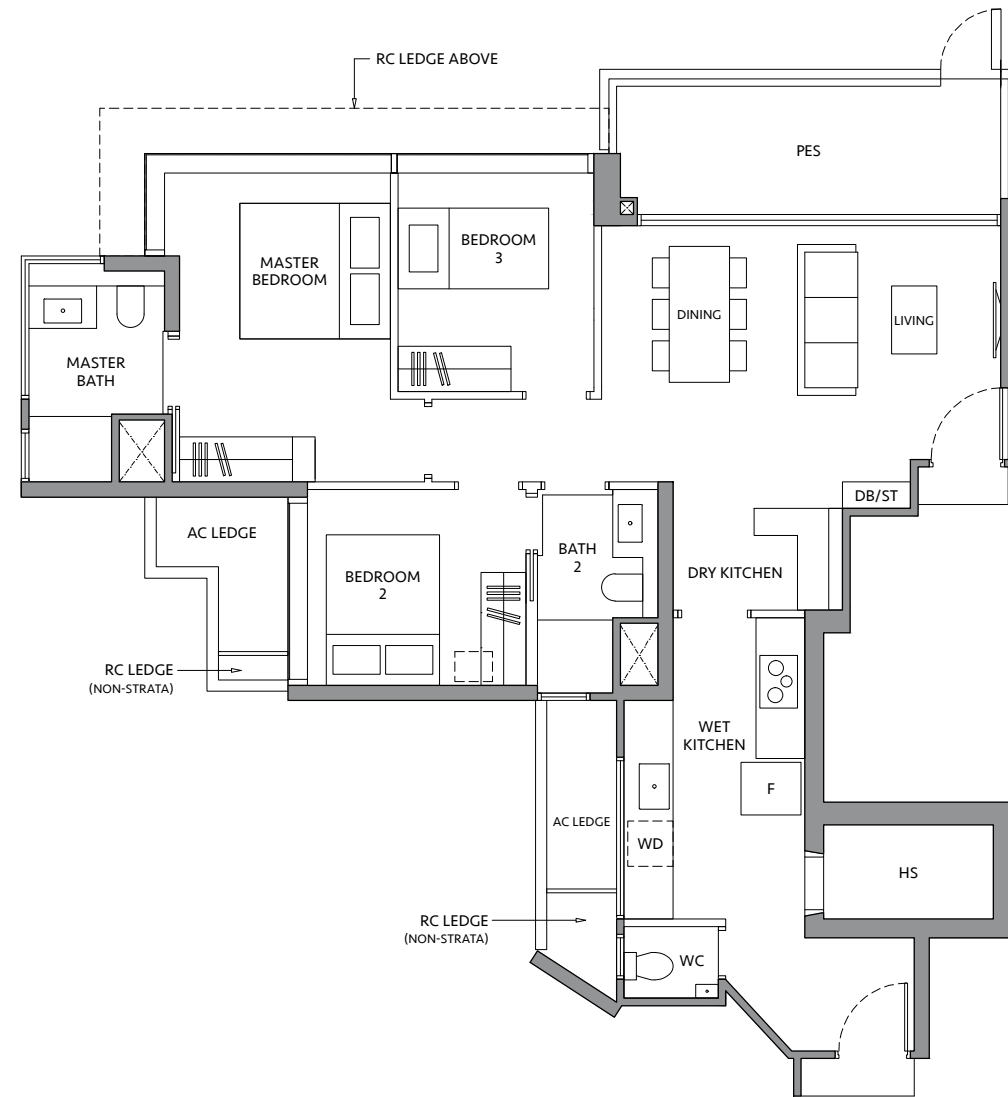
Area includes air-con (A/C) ledge, private enclosed space (PES), balcony and strata void area where applicable. Some units are mirror images of the apartment plans shown in the brochure. Please refer to the key plan for orientation. The plans are subject to change as may be approved by relevant authorities. All floor plans are approximate measurements only and are subject to government re-survey. The PES and balcony shall not be enclosed unless with the approved balcony screen.

### TYPE C3-G

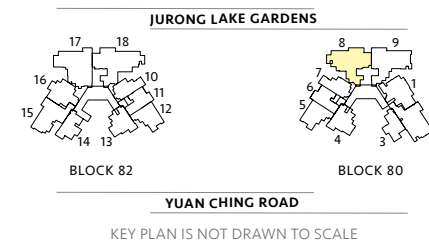
105 sq m / 1,130 sq ft

BLK 80  
#01-08

# 3 BED ROOM



Area includes air-con (A/C) ledge, private enclosed space (PES), balcony and strata void area where applicable. Some units are mirror images of the apartment plans shown in the brochure. Please refer to the key plan for orientation. The plans are subject to change as may be approved by relevant authorities. All floor plans are approximate measurements only and are subject to government re-survey. The PES and balcony shall not be enclosed unless with the approved balcony screen.



KEY PLAN IS NOT DRAWN TO SCALE

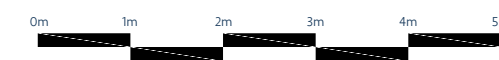
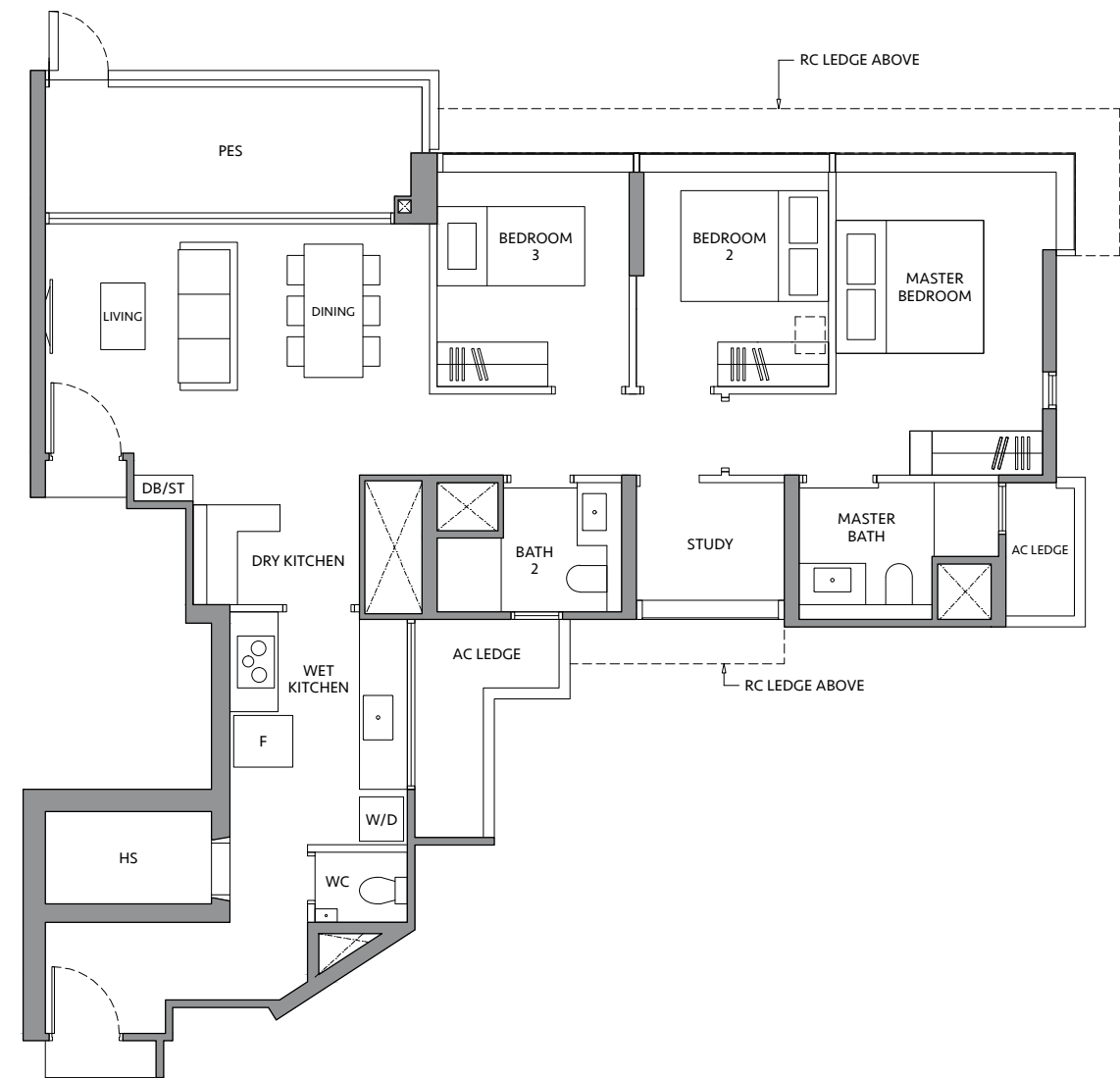


### TYPE CS3P-G

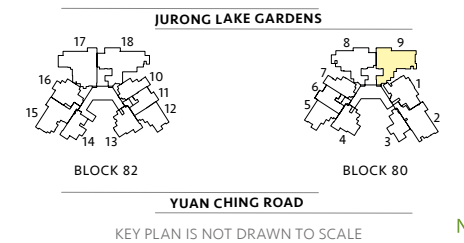
112 sq m / 1,206 sq ft

BLK 80  
#01-09

# 3 BED ROOM + STUDY (PREMIUM)



Area includes air-con (A/C) ledge, private enclosed space (PES), balcony and strata void area where applicable. Some units are mirror images of the apartment plans shown in the brochure. Please refer to the key plan for orientation. The plans are subject to change as may be approved by relevant authorities. All floor plans are approximate measurements only and are subject to government re-survey. The PES and balcony shall not be enclosed unless with the approved balcony screen.



KEY PLAN IS NOT DRAWN TO SCALE





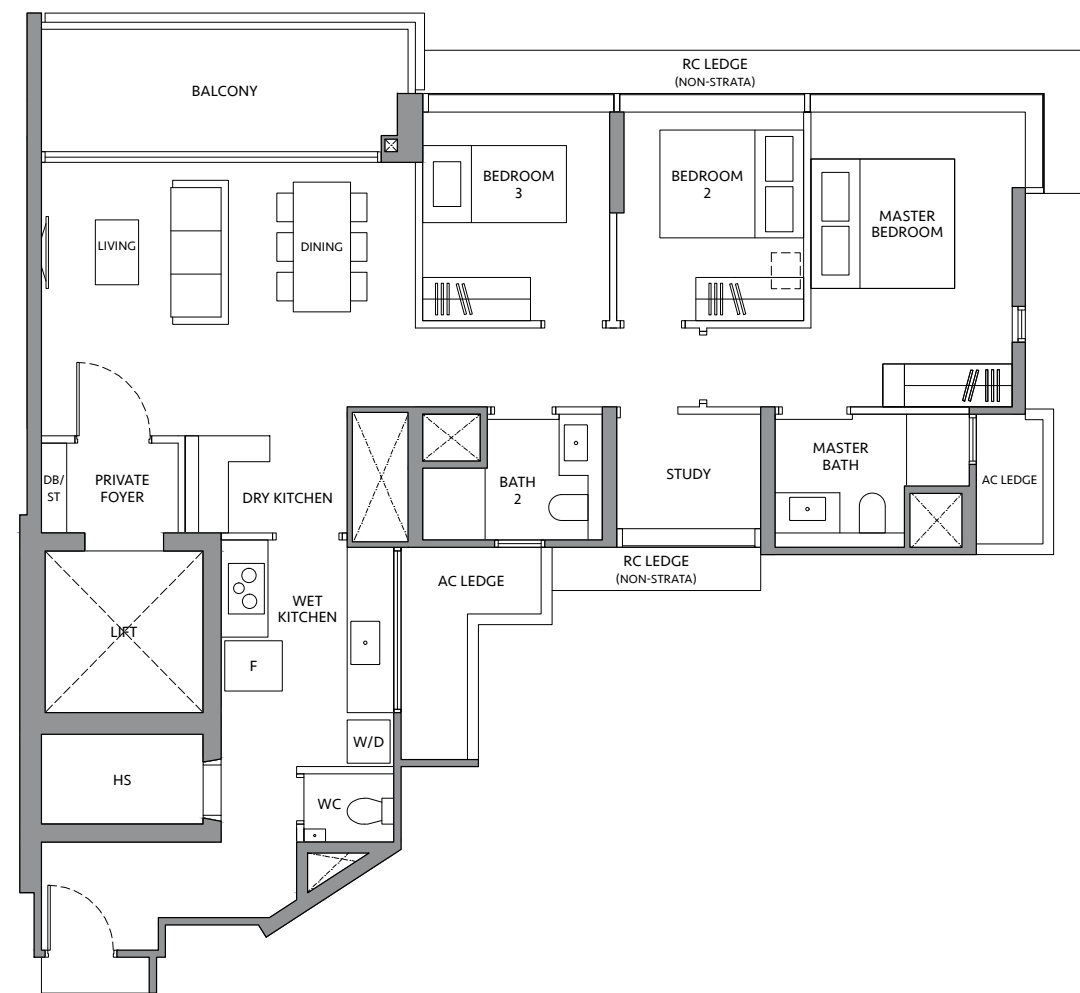
### TYPE CS3P

115 sq m / 1,238 sq ft

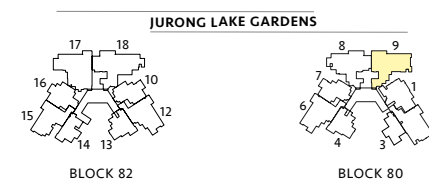
BLK 80

#02-09 to #18-09

# 3 BED ROOM + STUDY (PREMIUM)



Area includes air-con (A/C) ledge, private enclosed space (PES), balcony and strata void area where applicable. Some units are mirror images of the apartment plans shown in the brochure. Please refer to the key plan for orientation. The plans are subject to change as may be approved by relevant authorities. All floor plans are approximate measurements only and are subject to government re-survey. The PES and balcony shall not be enclosed unless with the approved balcony screen.



KEY PLAN IS NOT DRAWN TO SCALE



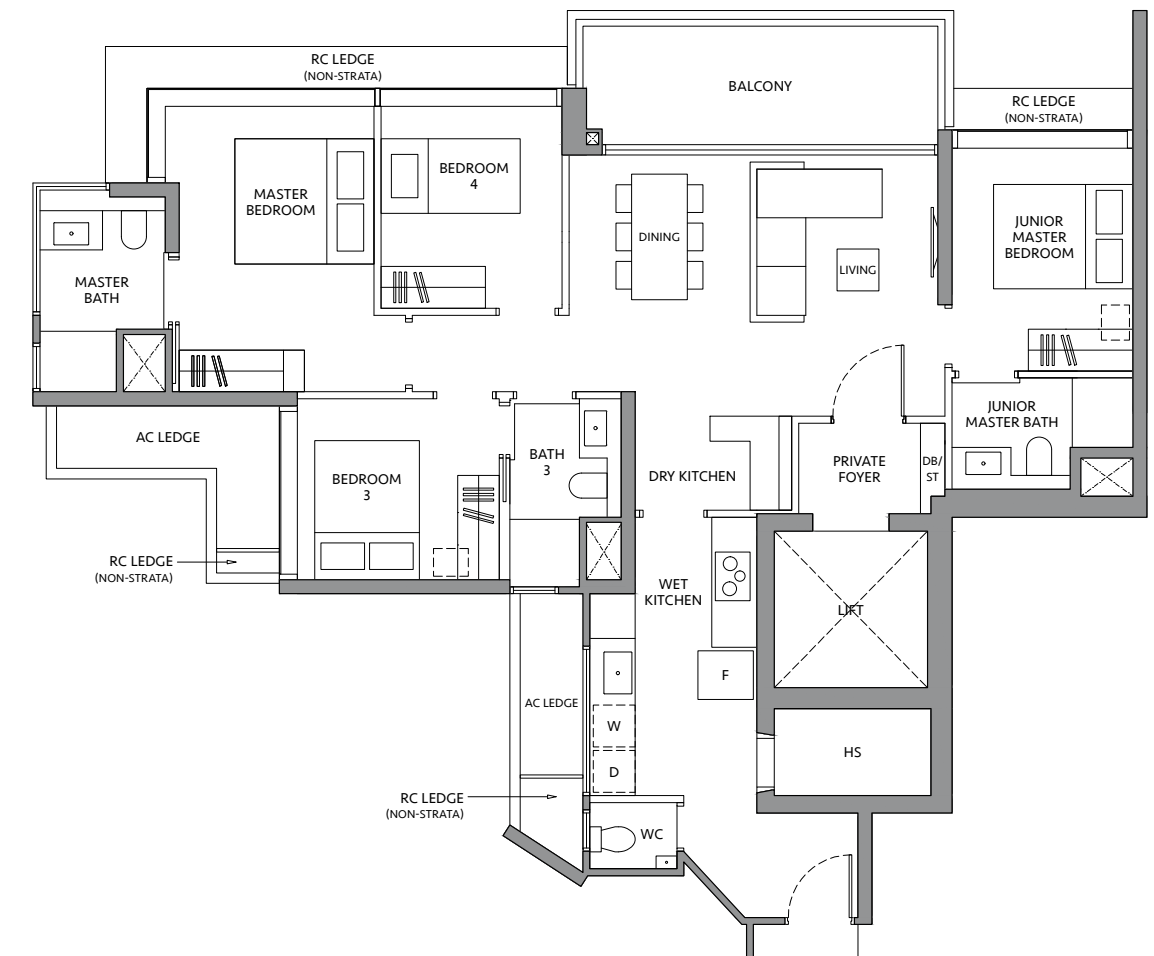
### TYPE D1

124 sq m / 1,335 sq ft

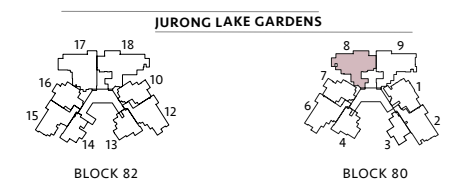
BLK 80

#02-08 to #18-08

# 4 BED ROOM



Area includes air-con (A/C) ledge, private enclosed space (PES), balcony and strata void area where applicable. Some units are mirror images of the apartment plans shown in the brochure. Please refer to the key plan for orientation. The plans are subject to change as may be approved by relevant authorities. All floor plans are approximate measurements only and are subject to government re-survey. The PES and balcony shall not be enclosed unless with the approved balcony screen.



KEY PLAN IS NOT DRAWN TO SCALE

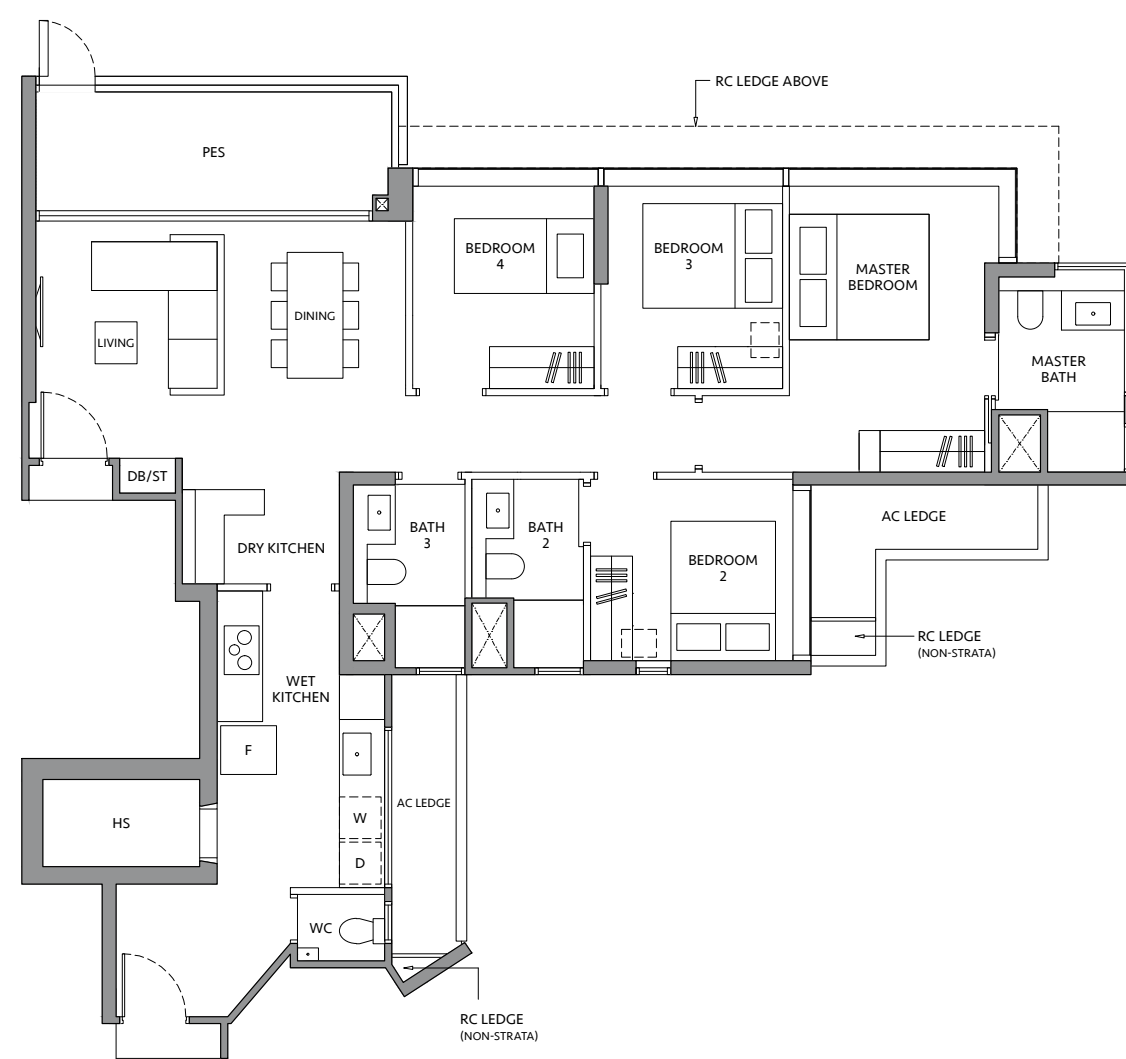


### TYPE D2-G

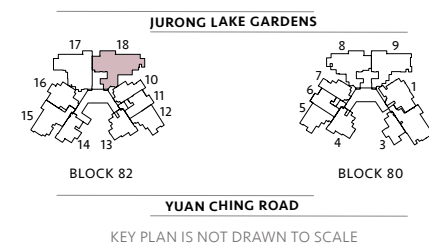
124 sq m / 1,335 sq ft

BLK 82  
#01-18

# 4 BED ROOM



Area includes air-con (A/C) ledge, private enclosed space (PES), balcony and strata void area where applicable. Some units are mirror images of the apartment plans shown in the brochure. Please refer to the key plan for orientation. The plans are subject to change as may be approved by relevant authorities. All floor plans are approximate measurements only and are subject to government re-survey. The PES and balcony shall not be enclosed unless with the approved balcony screen.

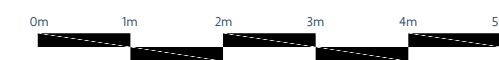
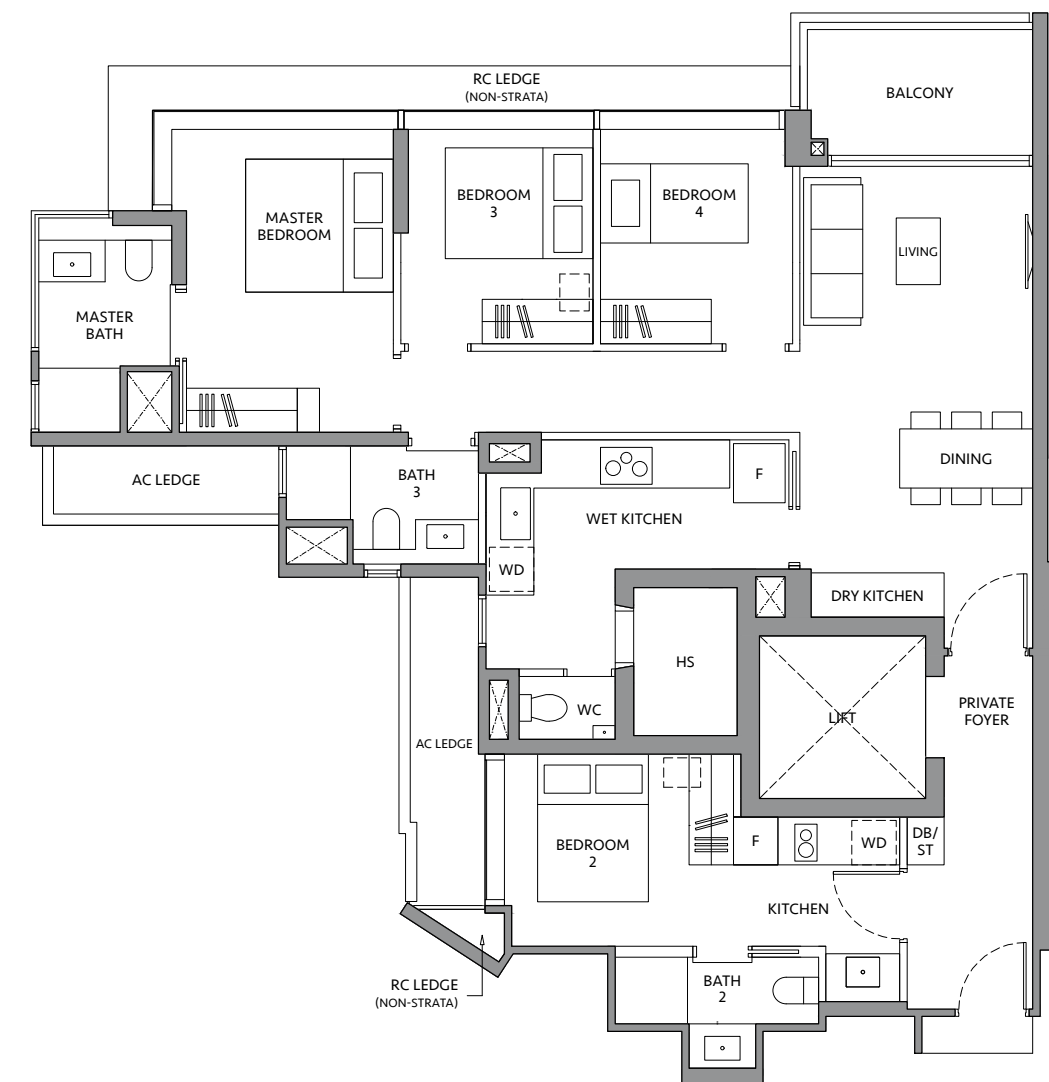


### TYPE D3DK

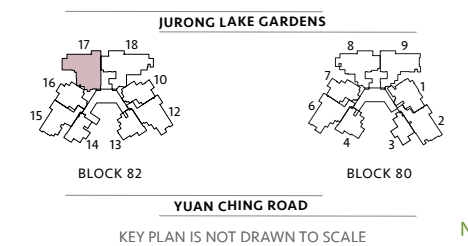
126 sq m / 1,356 sq ft

BLK 82  
#02-17 to #18-17

# 4 BED ROOM DUAL KEY



Area includes air-con (A/C) ledge, private enclosed space (PES), balcony and strata void area where applicable. Some units are mirror images of the apartment plans shown in the brochure. Please refer to the key plan for orientation. The plans are subject to change as may be approved by relevant authorities. All floor plans are approximate measurements only and are subject to government re-survey. The PES and balcony shall not be enclosed unless with the approved balcony screen.

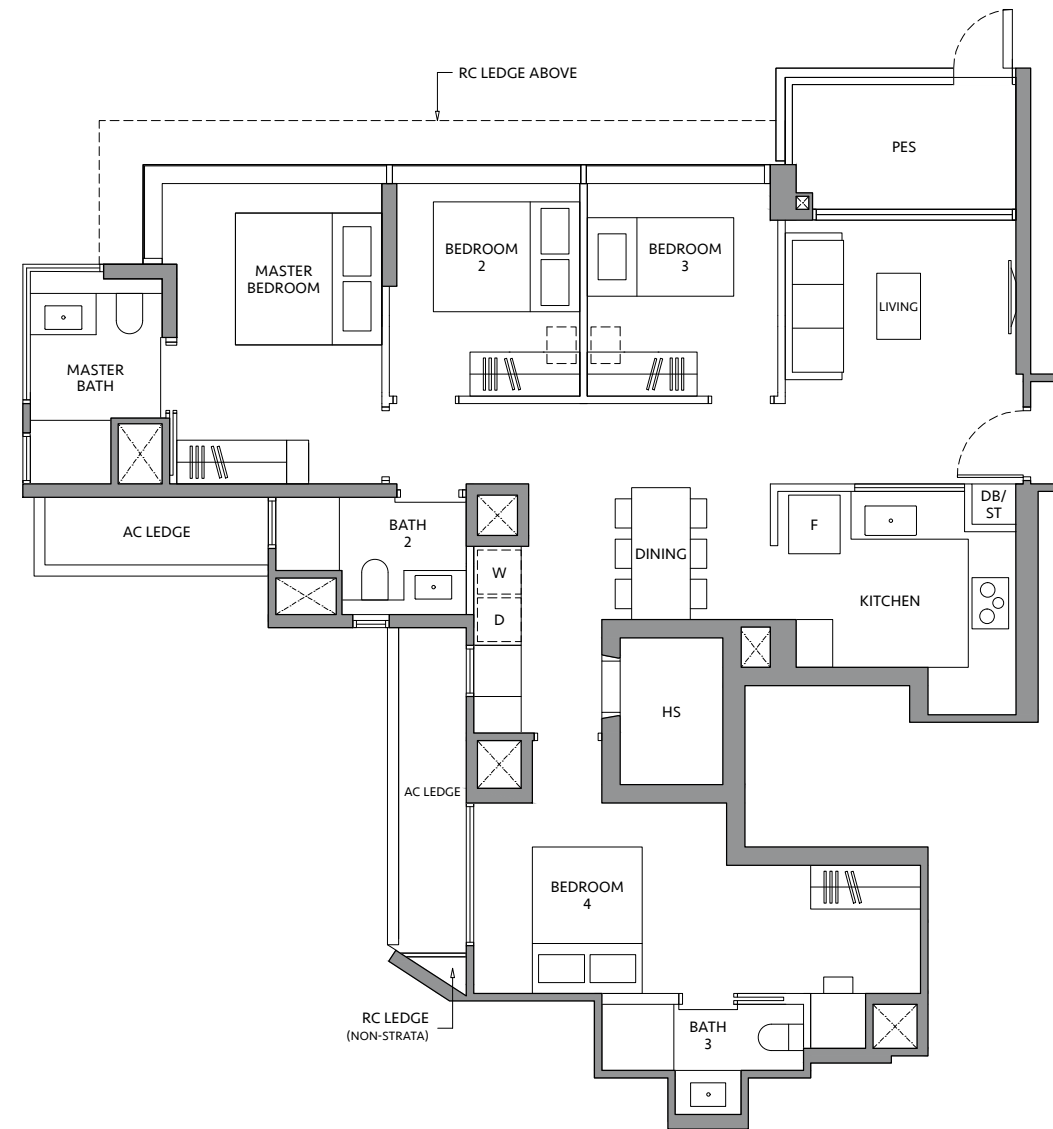


### TYPE D4-G

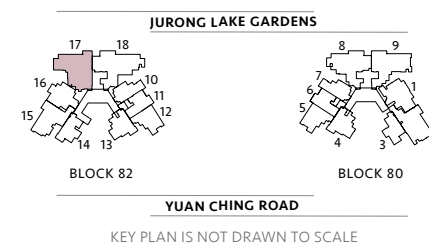
118 sq m / 1,270 sq ft

BLK 82  
#01-17

# 4 BED ROOM



Area includes air-con (A/C) ledge, private enclosed space (PES), balcony and strata void area where applicable. Some units are mirror images of the apartment plans shown in the brochure. Please refer to the key plan for orientation. The plans are subject to change as may be approved by relevant authorities. All floor plans are approximate measurements only and are subject to government re-survey. The PES and balcony shall not be enclosed unless with the approved balcony screen.

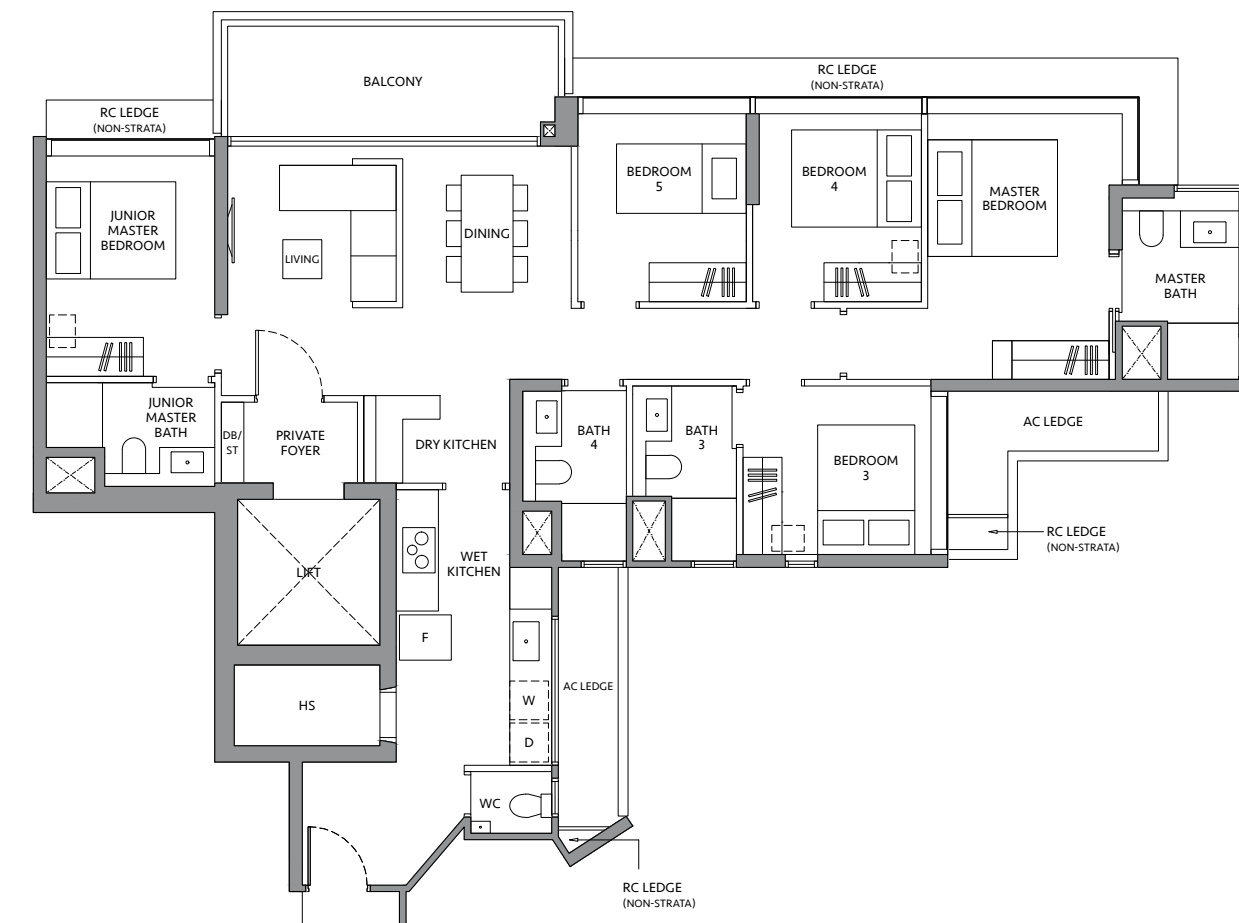


### TYPE E1

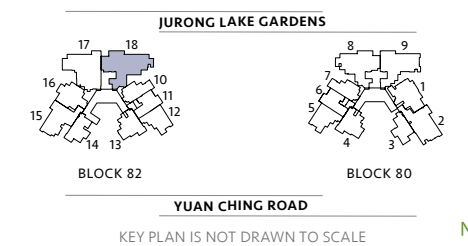
144 sq m / 1,550 sq ft

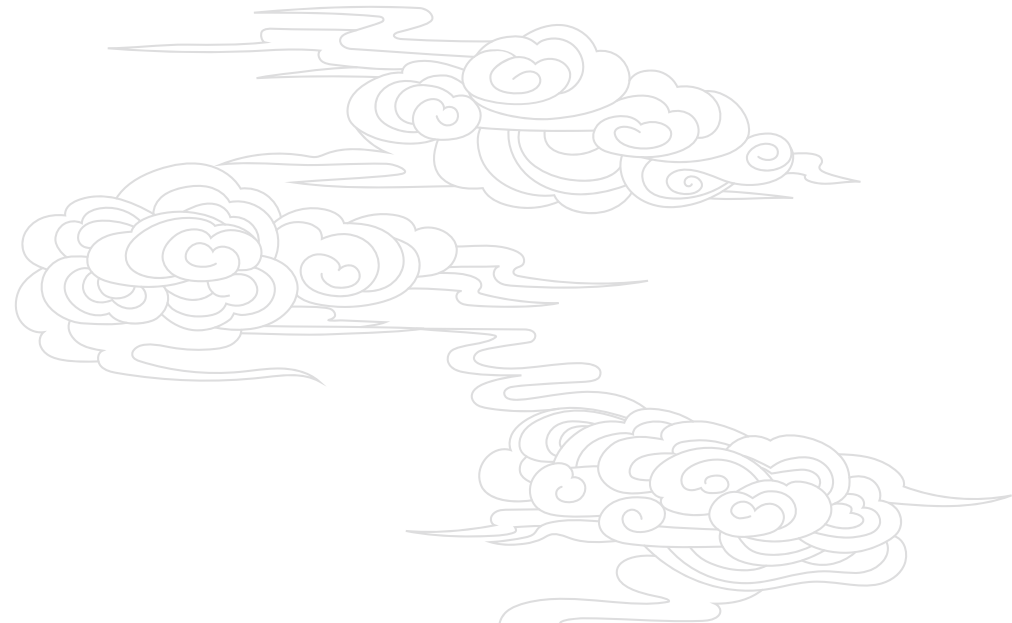
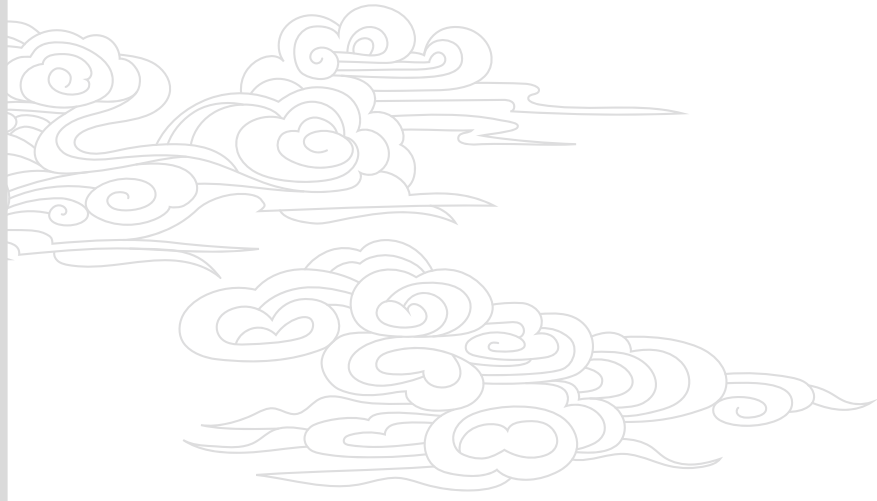
BLK 82  
#02-18 to #18-18

# 5 BED ROOM



Area includes air-con (A/C) ledge, private enclosed space (PES), balcony and strata void area where applicable. Some units are mirror images of the apartment plans shown in the brochure. Please refer to the key plan for orientation. The plans are subject to change as may be approved by relevant authorities. All floor plans are approximate measurements only and are subject to government re-survey. The PES and balcony shall not be enclosed unless with the approved balcony screen.



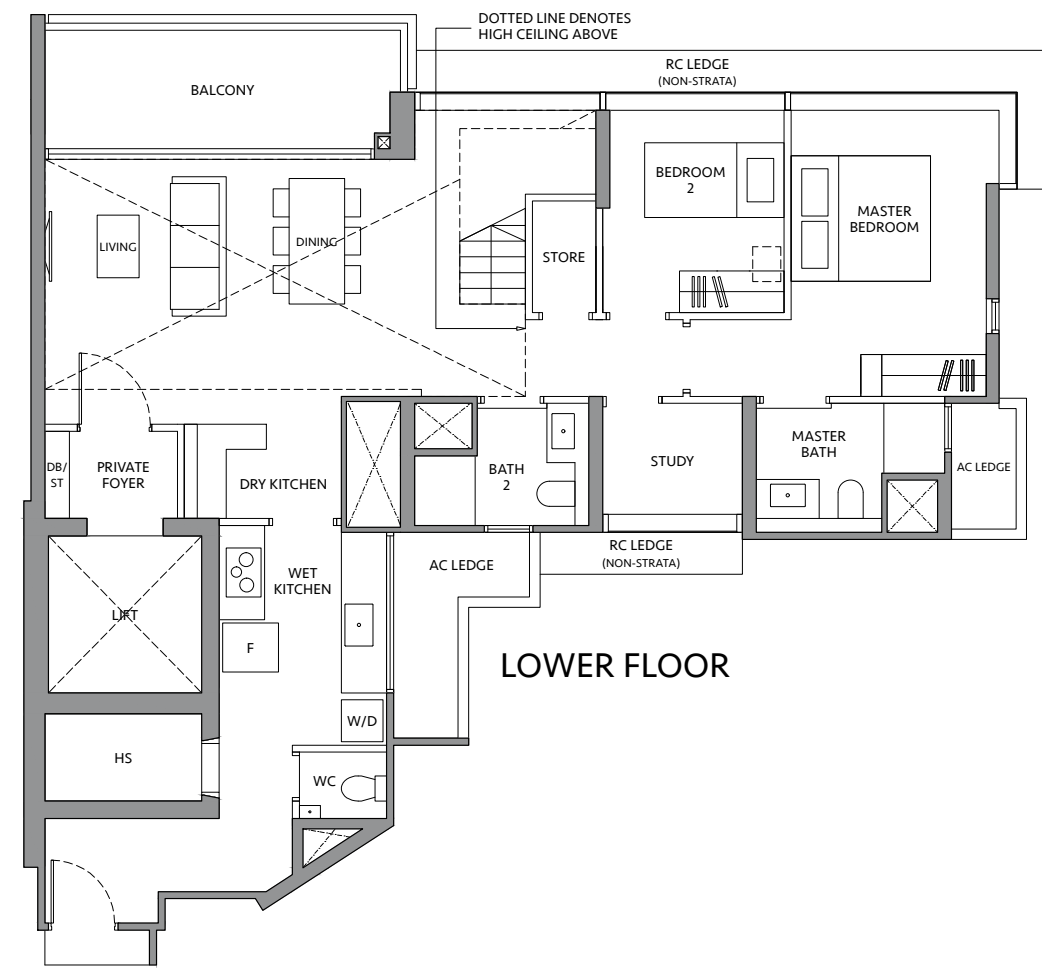
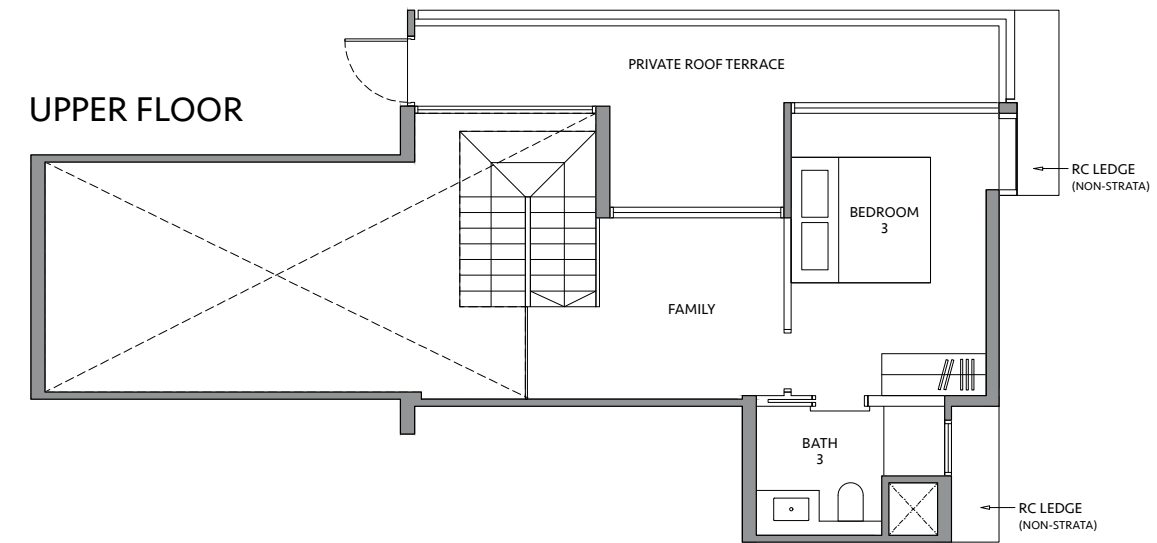


**TYPE CS3P-PH**

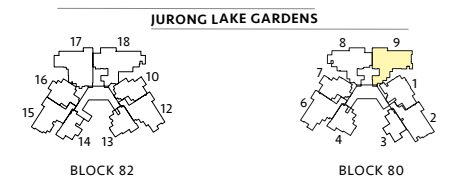
186 sq m / 2,002 sq ft  
 INCLUDING STRATA VOID  
 AREA OF 27 sq m / 291 sq ft  
 ABOVE LIVING, DINING AND STAIRCASE

**BLK 80**  
 #19-09

**3 BED ROOM**  
**+ STUDY**  
**(PREMIUM)**



Area includes air-con (A/C) ledge, private enclosed space (PES), balcony and strata void area where applicable. Some units are mirror images of the apartment plans shown in the brochure. Please refer to the key plan for orientation. The plans are subject to change as may be approved by relevant authorities. All floor plans are approximate measurements only and are subject to government re-survey. The PES and balcony shall not be enclosed unless with the approved balcony screen.



**YUAN CHING ROAD**

KEY PLAN IS NOT DRAWN TO SCALE

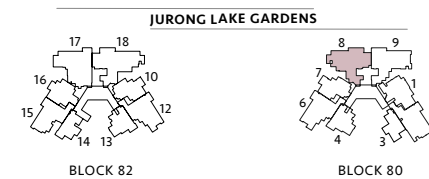
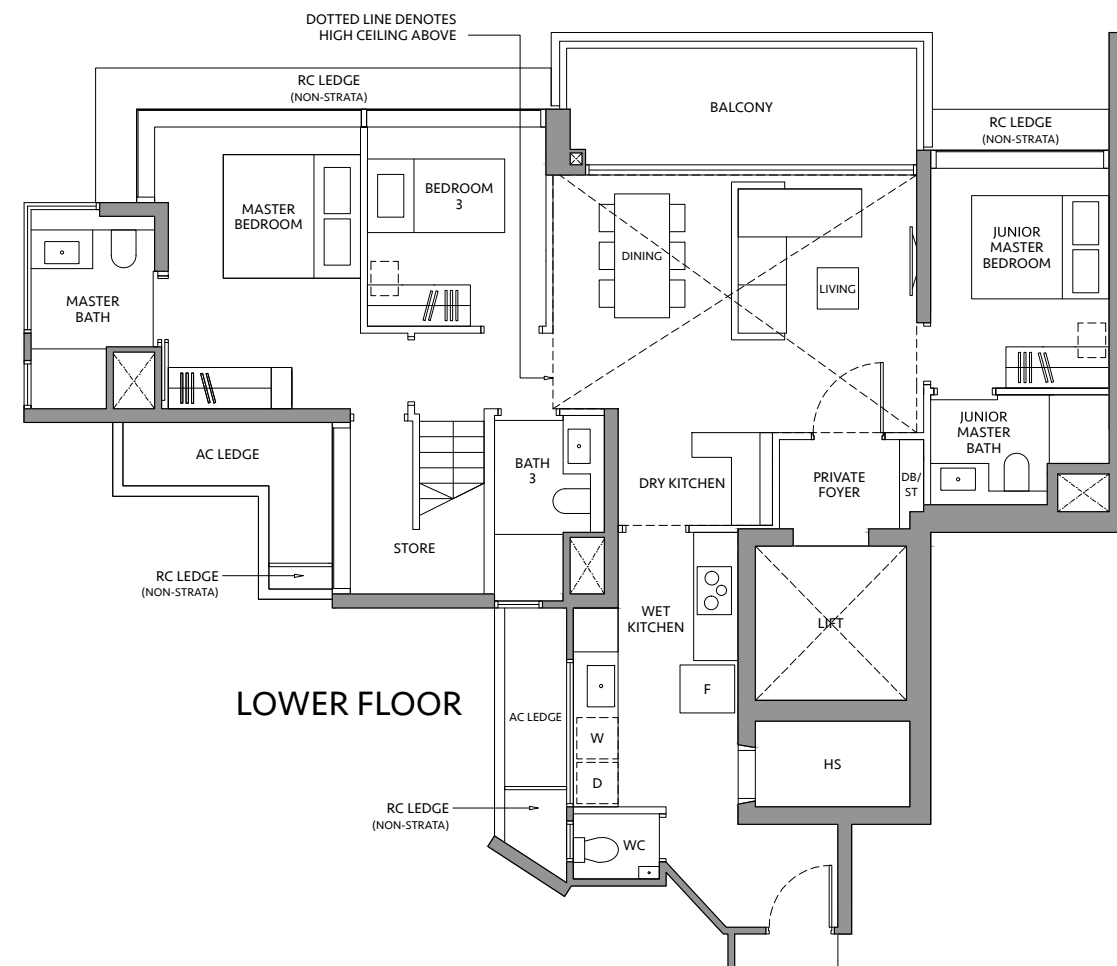
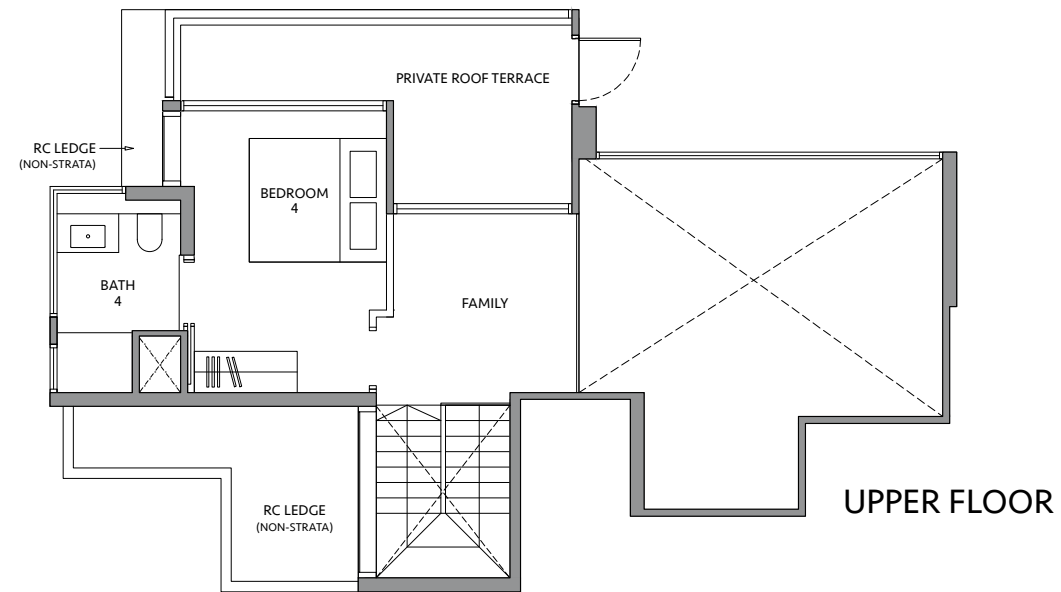


### TYPE D1-PH

189 sq m / 2,034 sq ft  
 INCLUDING STRATA VOID  
 AREA OF 28 sq m / 301 sq ft  
 ABOVE LIVING, DINING AND STAIRCASE

**BLK 80**  
 #19-08

# 4 BED ROOM



YUAN CHING ROAD  
 KEY PLAN IS NOT DRAWN TO SCALE



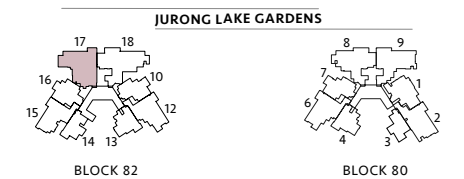
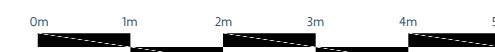
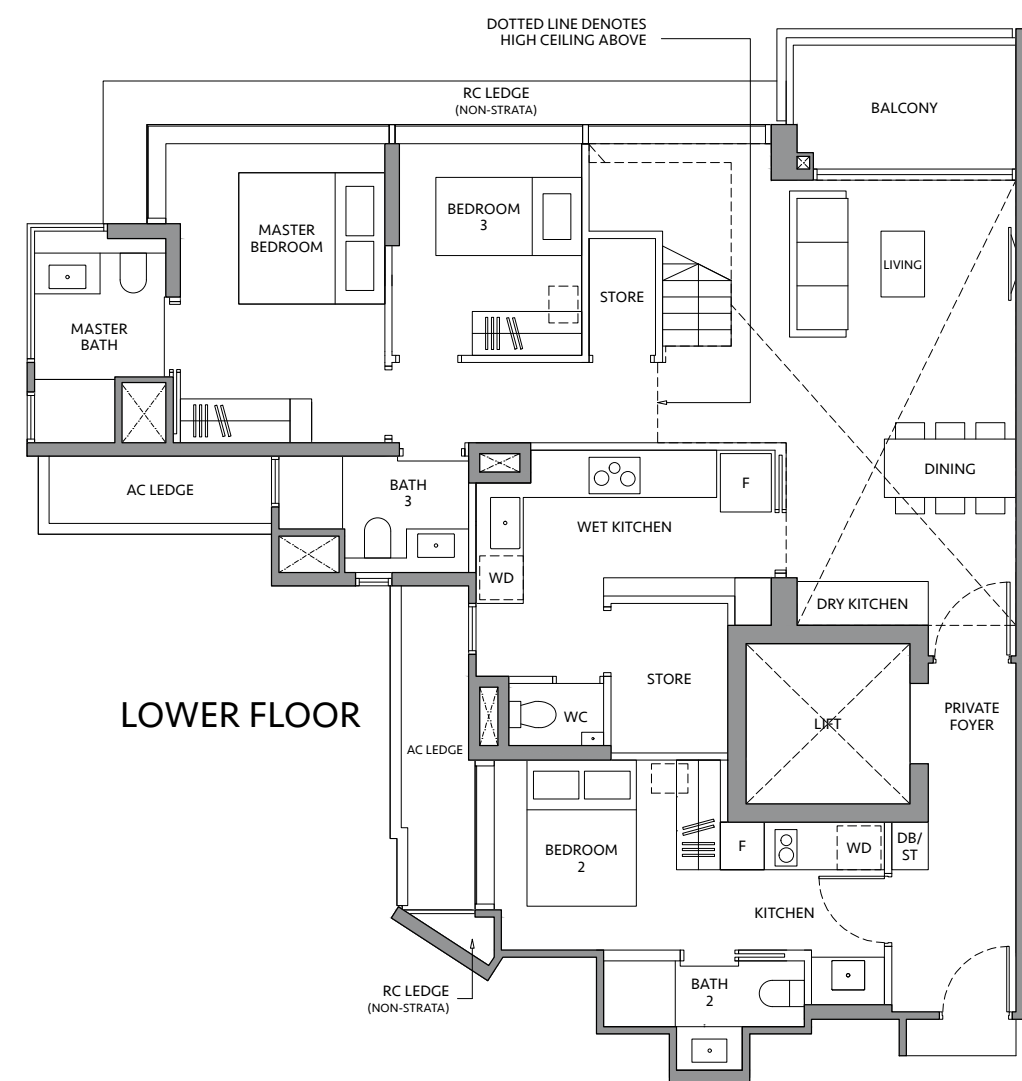
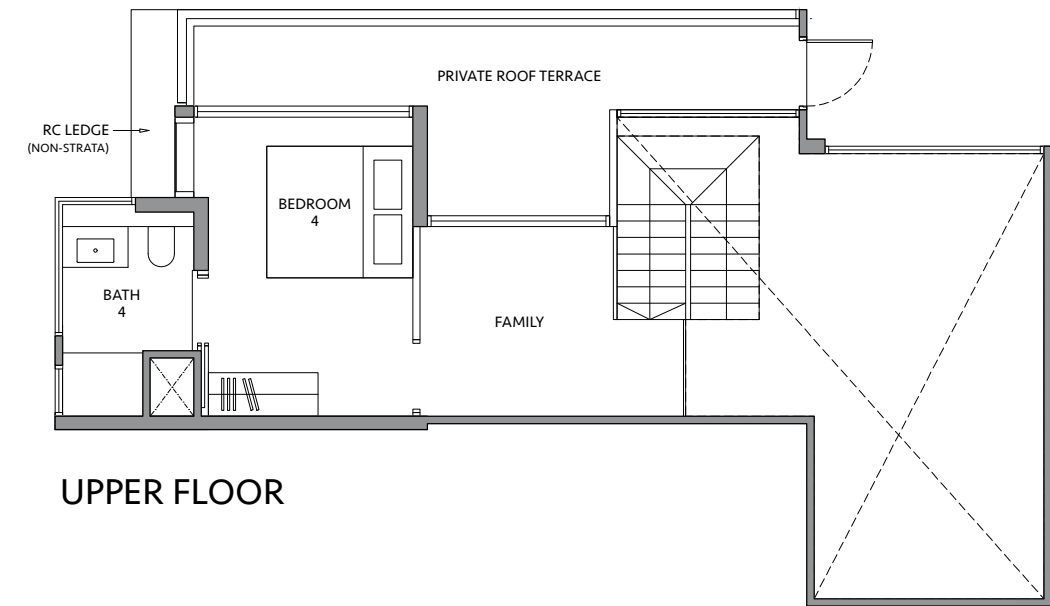
Area includes air-con (A/C) ledge, private enclosed space (PES), balcony and strata void area where applicable. Some units are mirror images of the apartment plans shown in the brochure. Please refer to the key plan for orientation. The plans are subject to change as may be approved by relevant authorities. All floor plans are approximate measurements only and are subject to government re-survey. The PES and balcony shall not be enclosed unless with the approved balcony screen.

### TYPE D3DK-PH

200 sq m / 2,153 sq ft  
 INCLUDING STRATA VOID  
 AREA OF 29 sq m / 312 sq ft  
 ABOVE LIVING, DINING AND STAIRCASE

**BLK 82**  
 #19-17

# 4 BED ROOM DUAL KEY



YUAN CHING ROAD  
 KEY PLAN IS NOT DRAWN TO SCALE



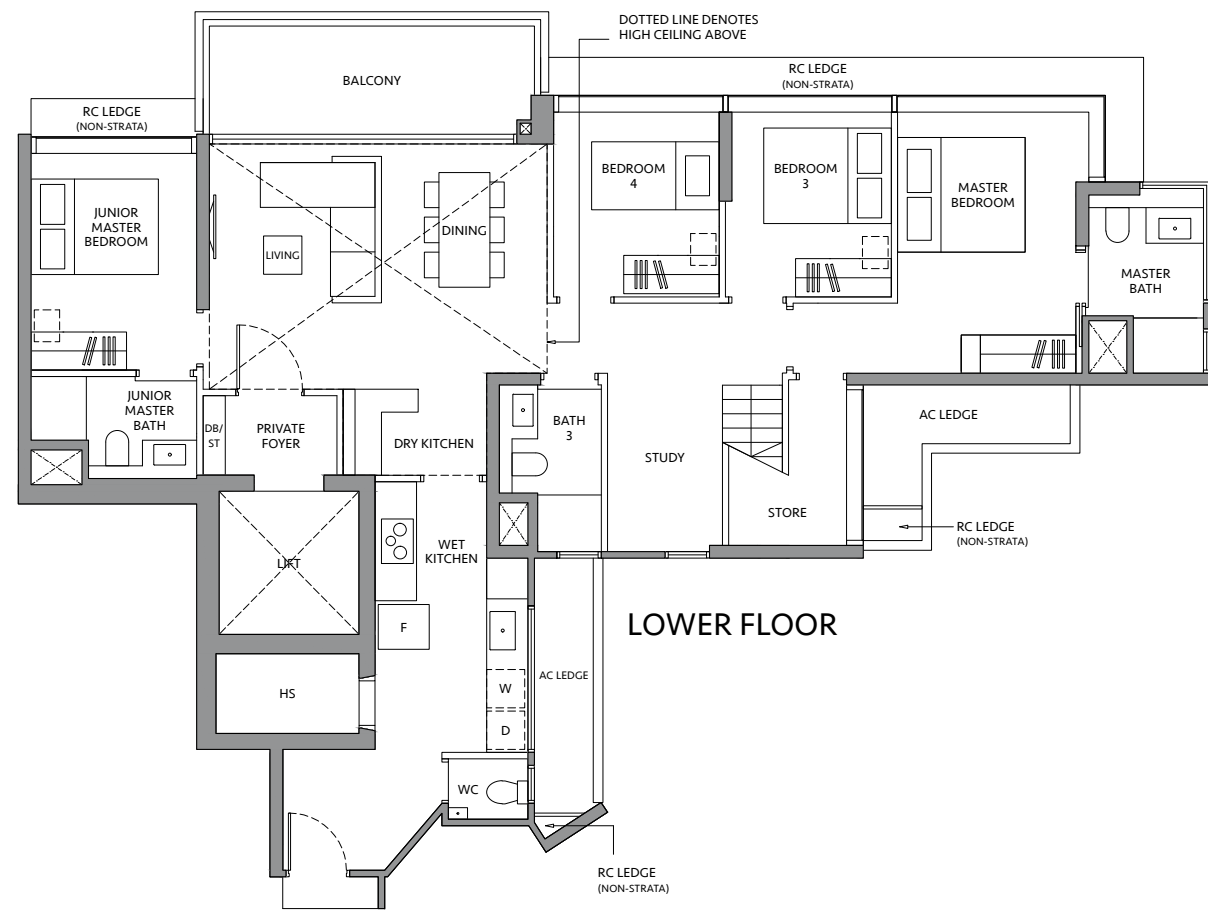
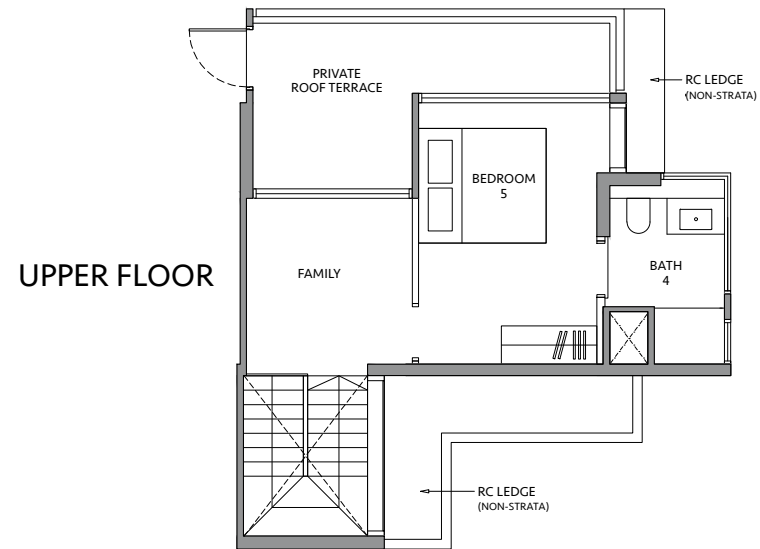
Area includes air-con (A/C) ledge, private enclosed space (PES), balcony and strata void area where applicable. Some units are mirror images of the apartment plans shown in the brochure. Please refer to the key plan for orientation. The plans are subject to change as may be approved by relevant authorities. All floor plans are approximate measurements only and are subject to government re-survey. The PES and balcony shall not be enclosed unless with the approved balcony screen.

# TYPE ES1-PH

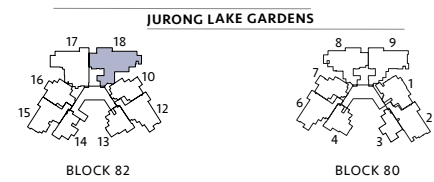
210 sq m / 2,260 sq ft  
INCLUDING STRATA VOID  
AREA OF 29 sq m / 312 sq ft  
ABOVE LIVING, DINING AND STAIRCASE

BLK 82  
#19-18

# 5 BED ROOM + STUDY



Area includes air-con (A/C) ledge, private enclosed space (PES), balcony and strata void area where applicable. Some units are mirror images of the apartment plans shown in the brochure. Please refer to the key plan for orientation. The plans are subject to change as may be approved by relevant authorities. All floor plans are approximate measurements only and are subject to government re-survey. The PES and balcony shall not be enclosed unless with the approved balcony screen.



KEY PLAN IS NOT DRAWN TO SCALE

